

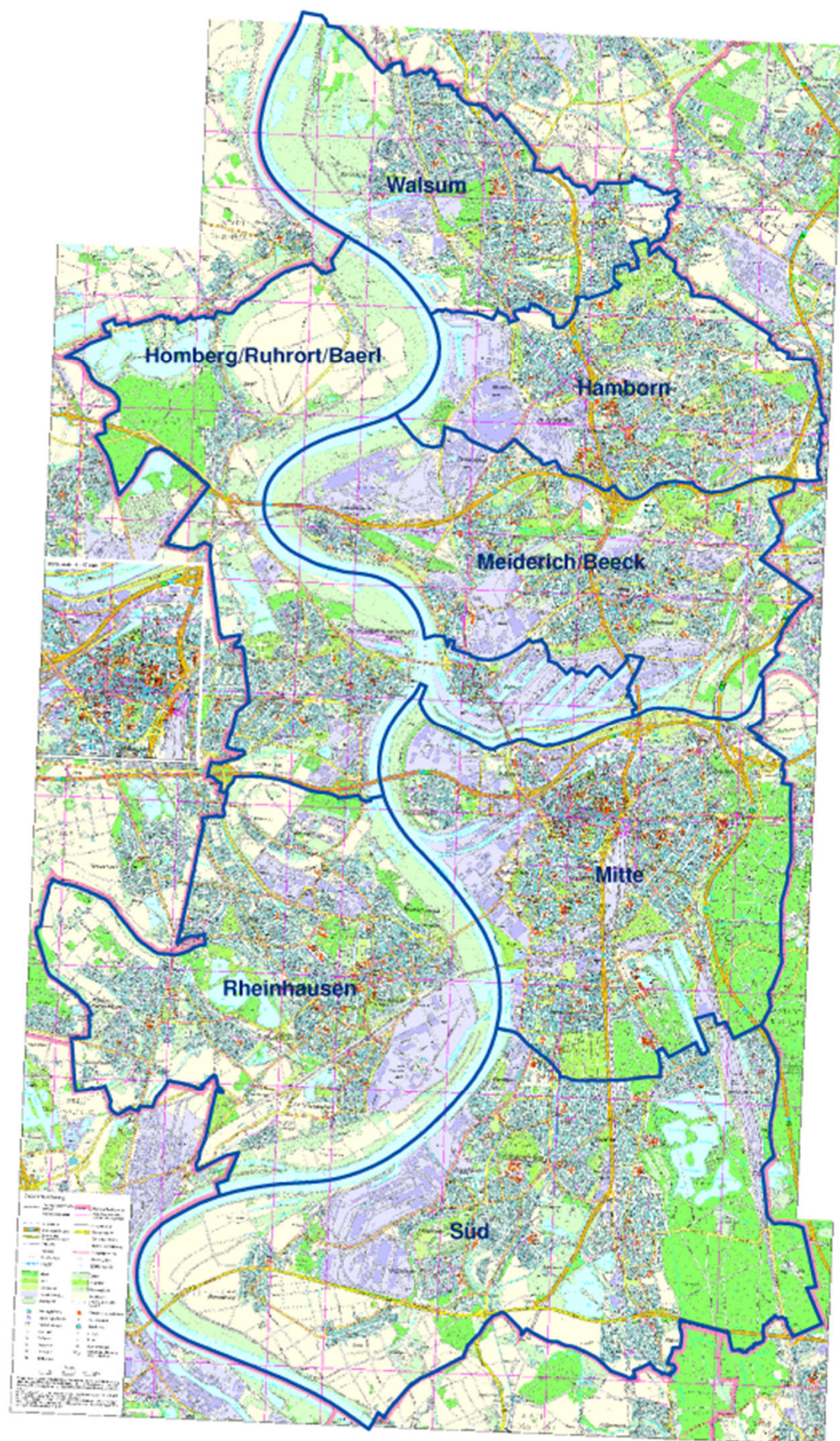
# Historisches GEO-Portal Stadt Duisburg

Übersicht:  
Stadtpläne und sonstige historische Karten



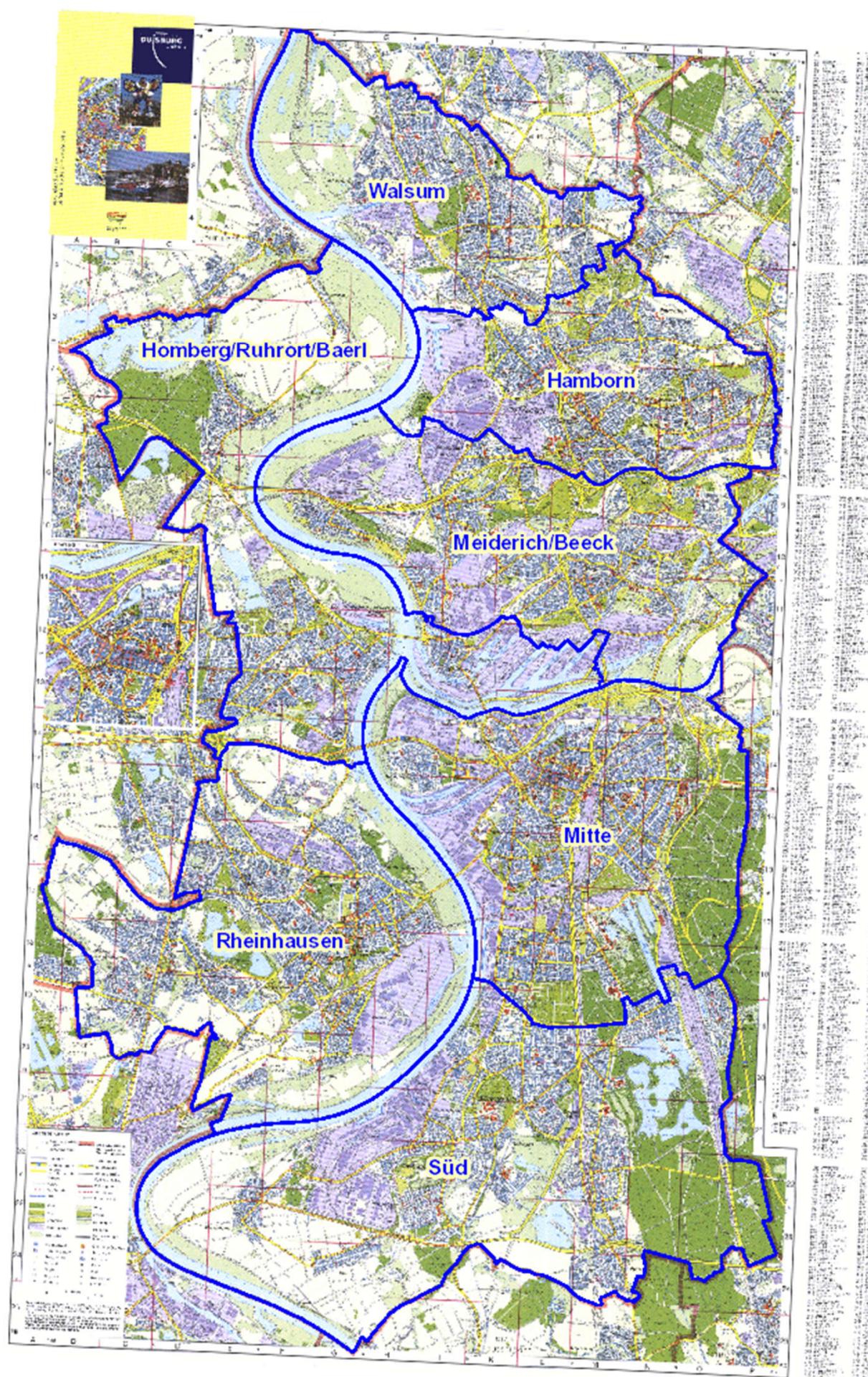


## 2007





2003



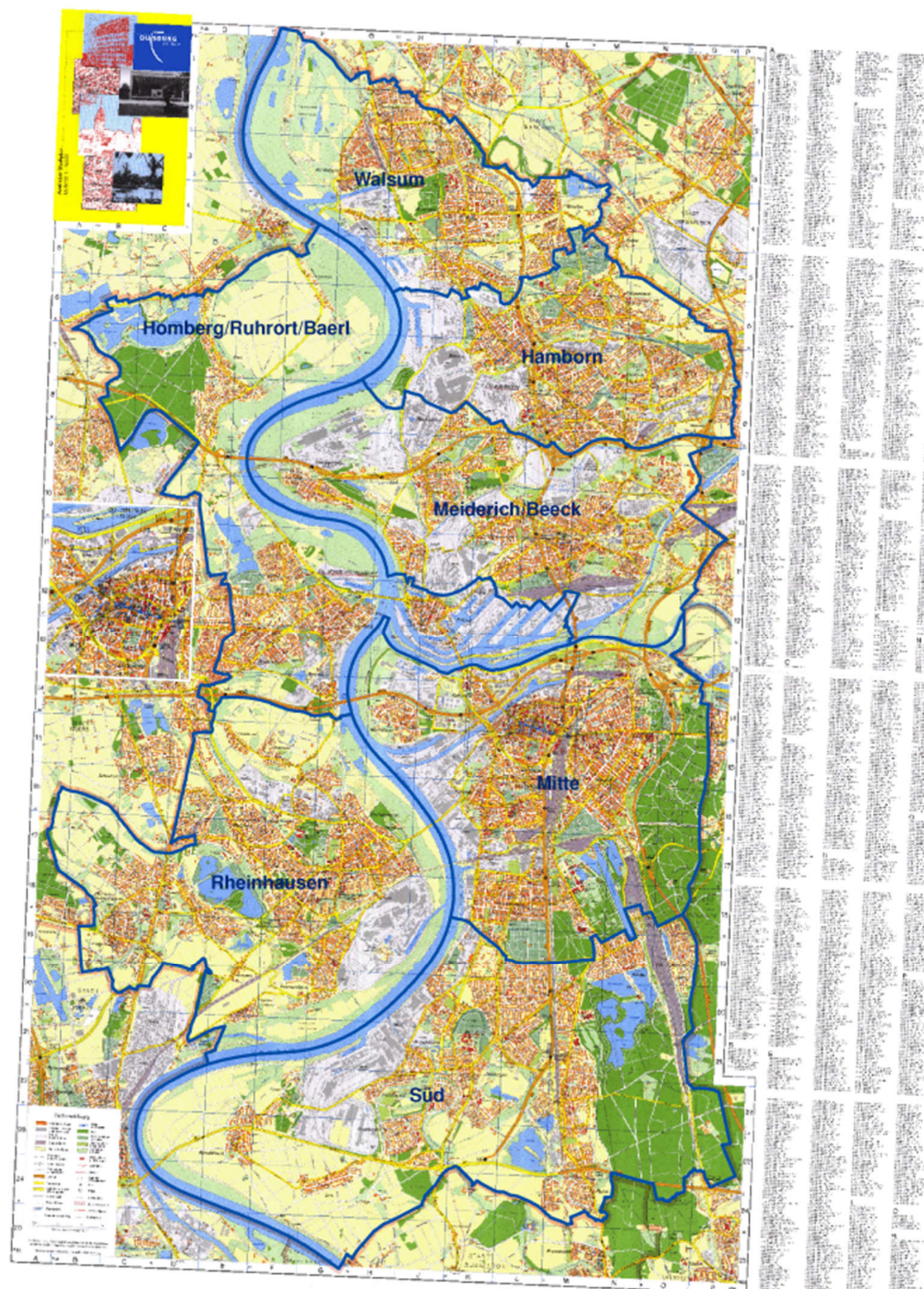


1999



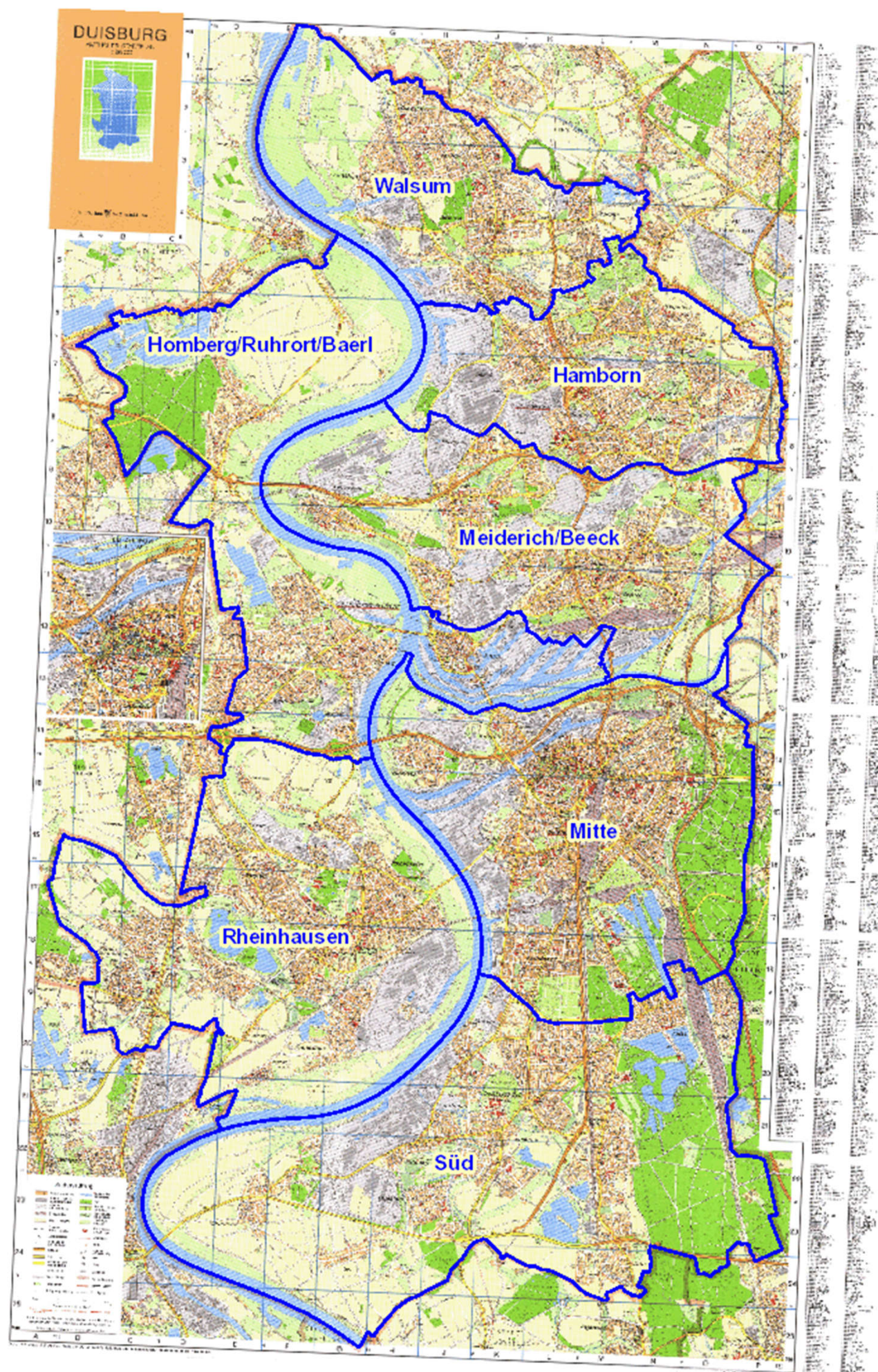


1995





1991





## 1986



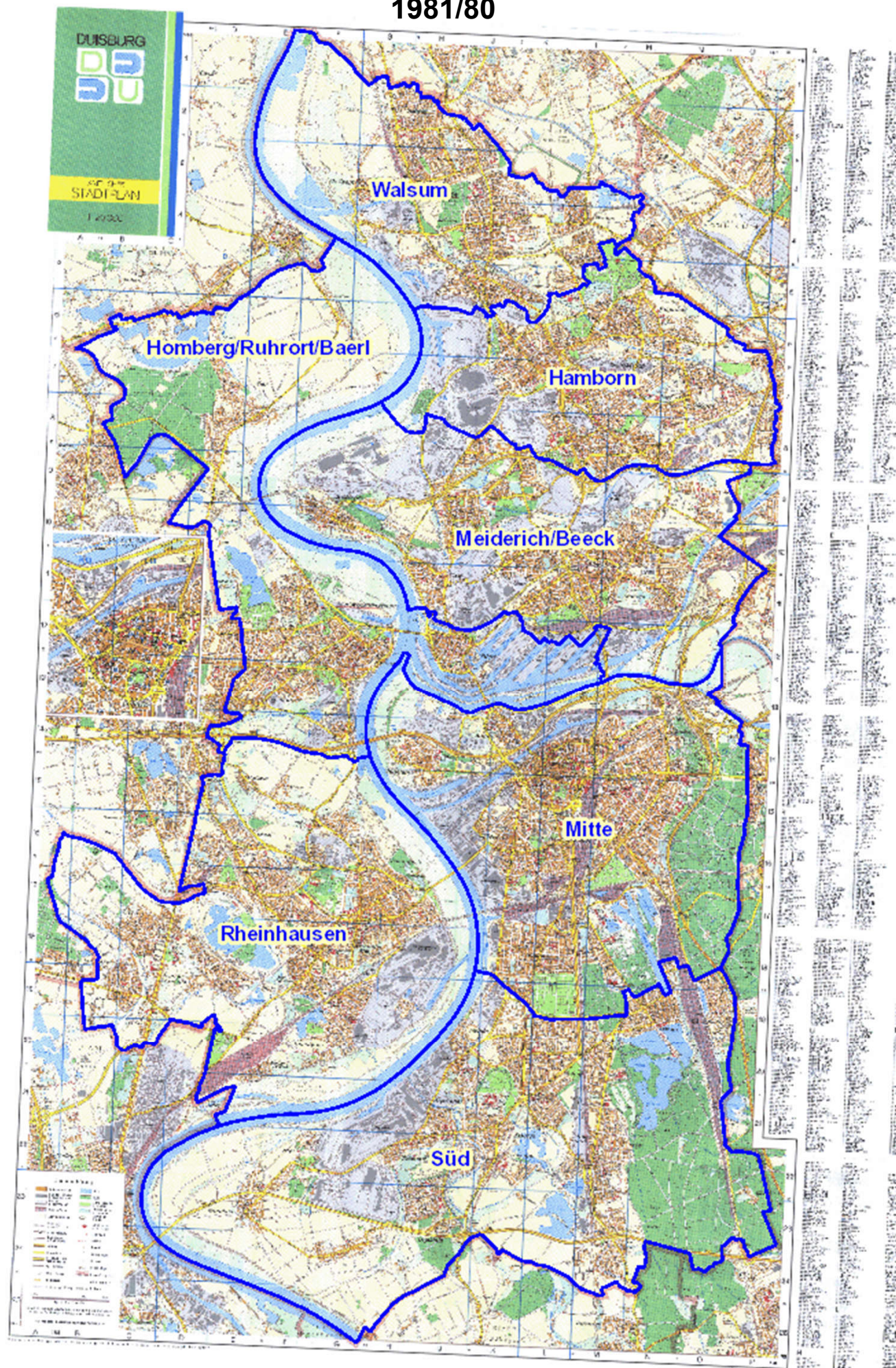


## 1983





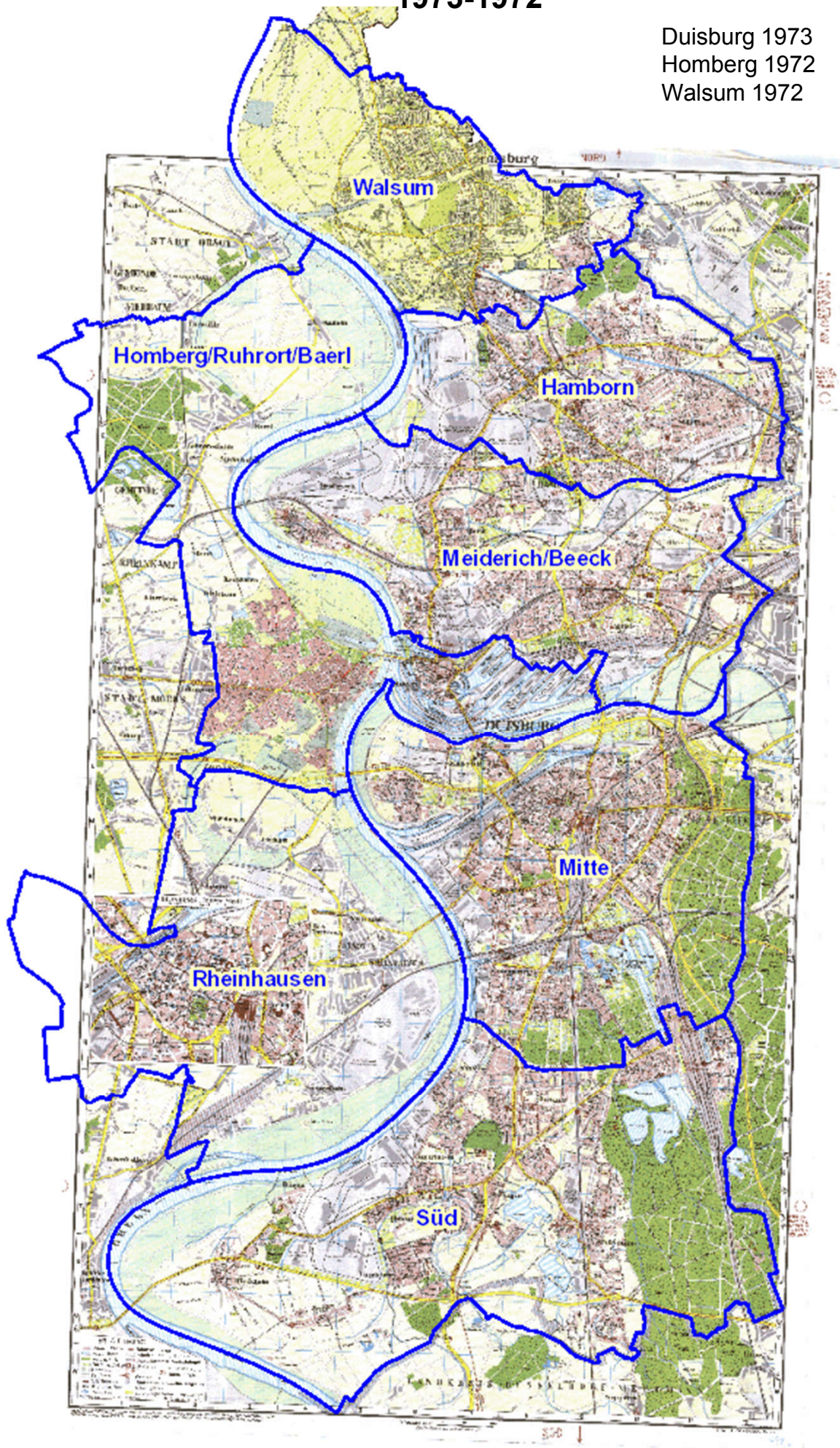
**1981/80**





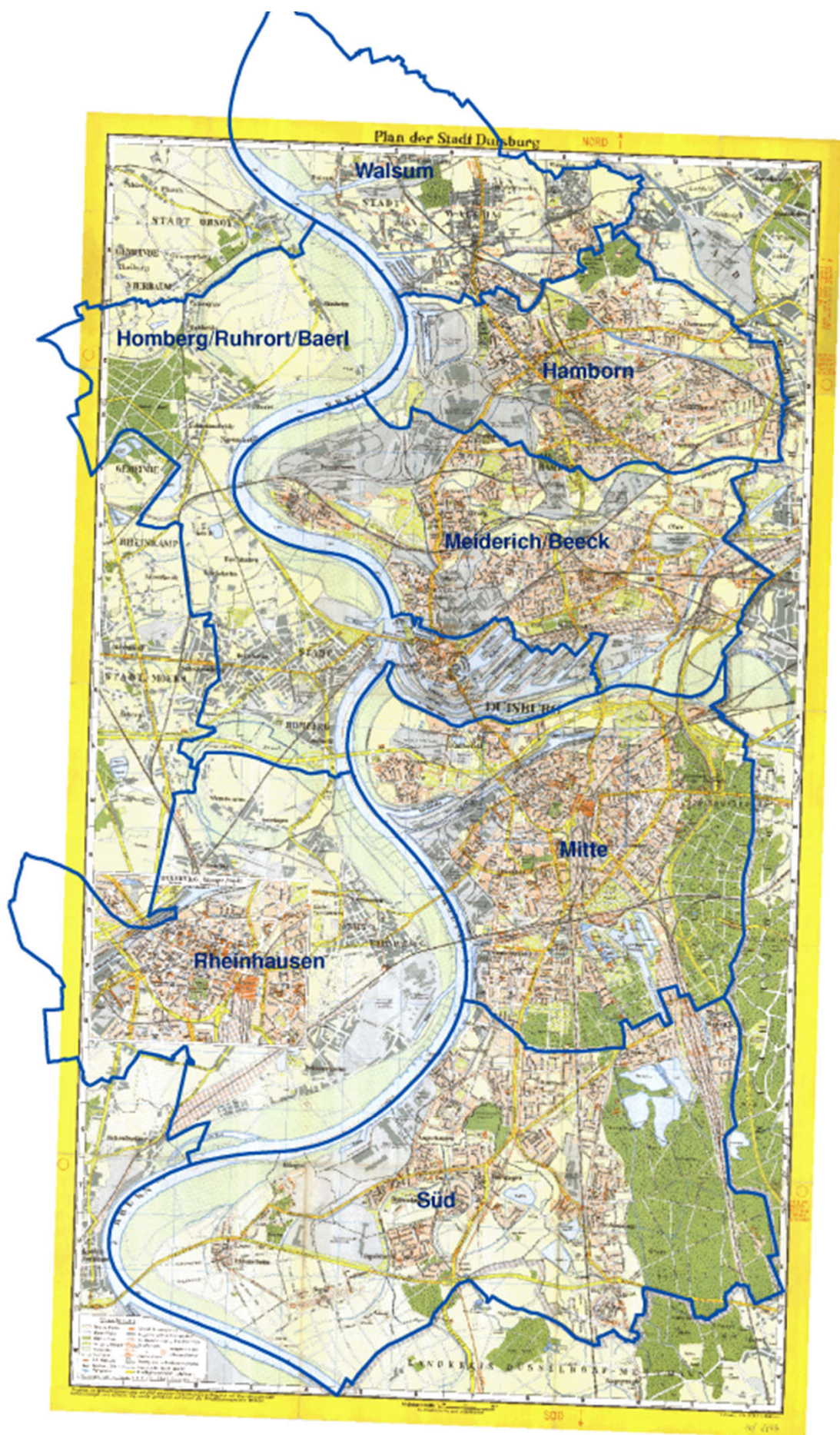
1973-1972

Duisburg 1973  
Homberg 1972  
Walsum 1972





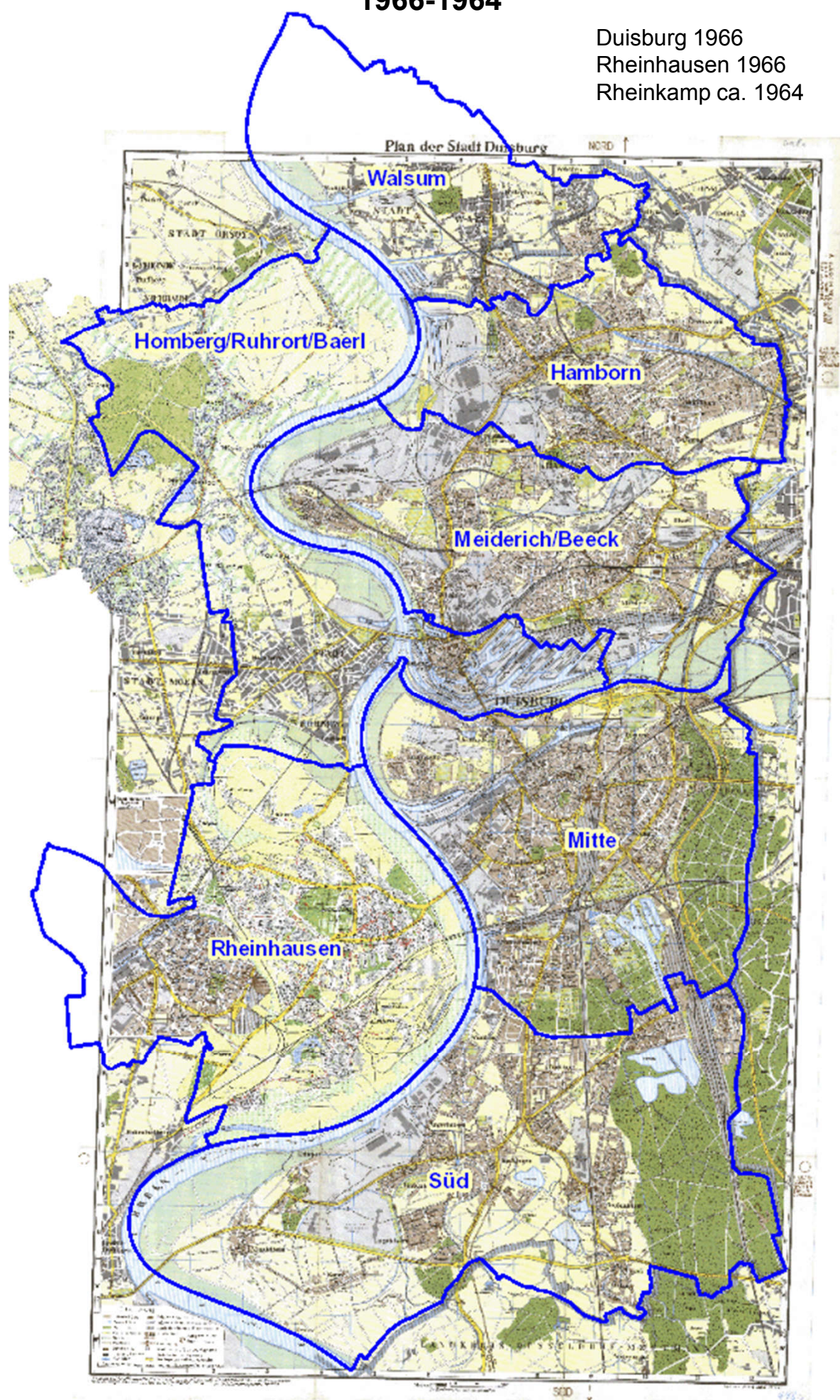
# 1969





**1966-1964**

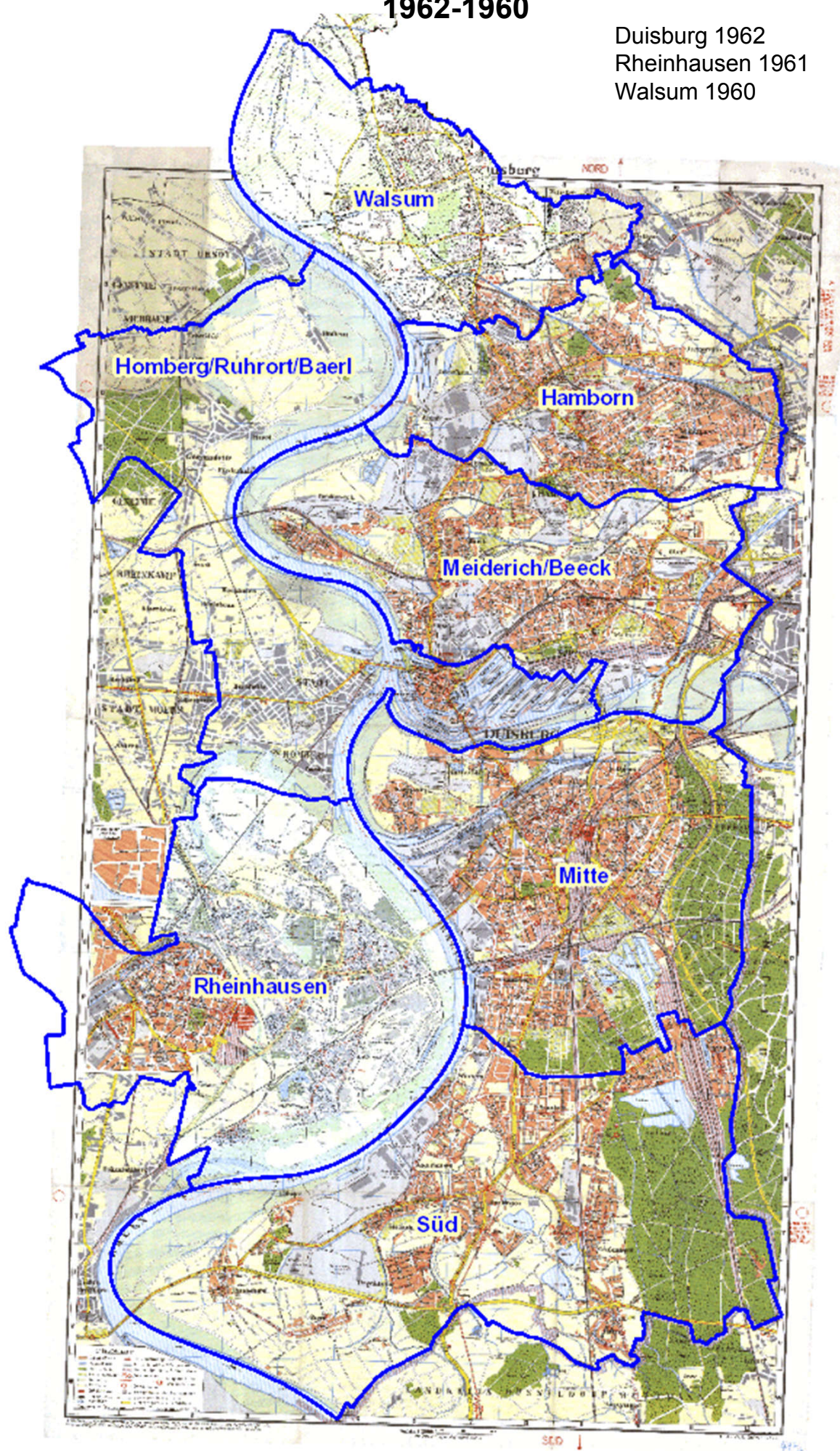
Duisburg 1966  
Rheinhausen 1966  
Rheinkamp ca. 1964





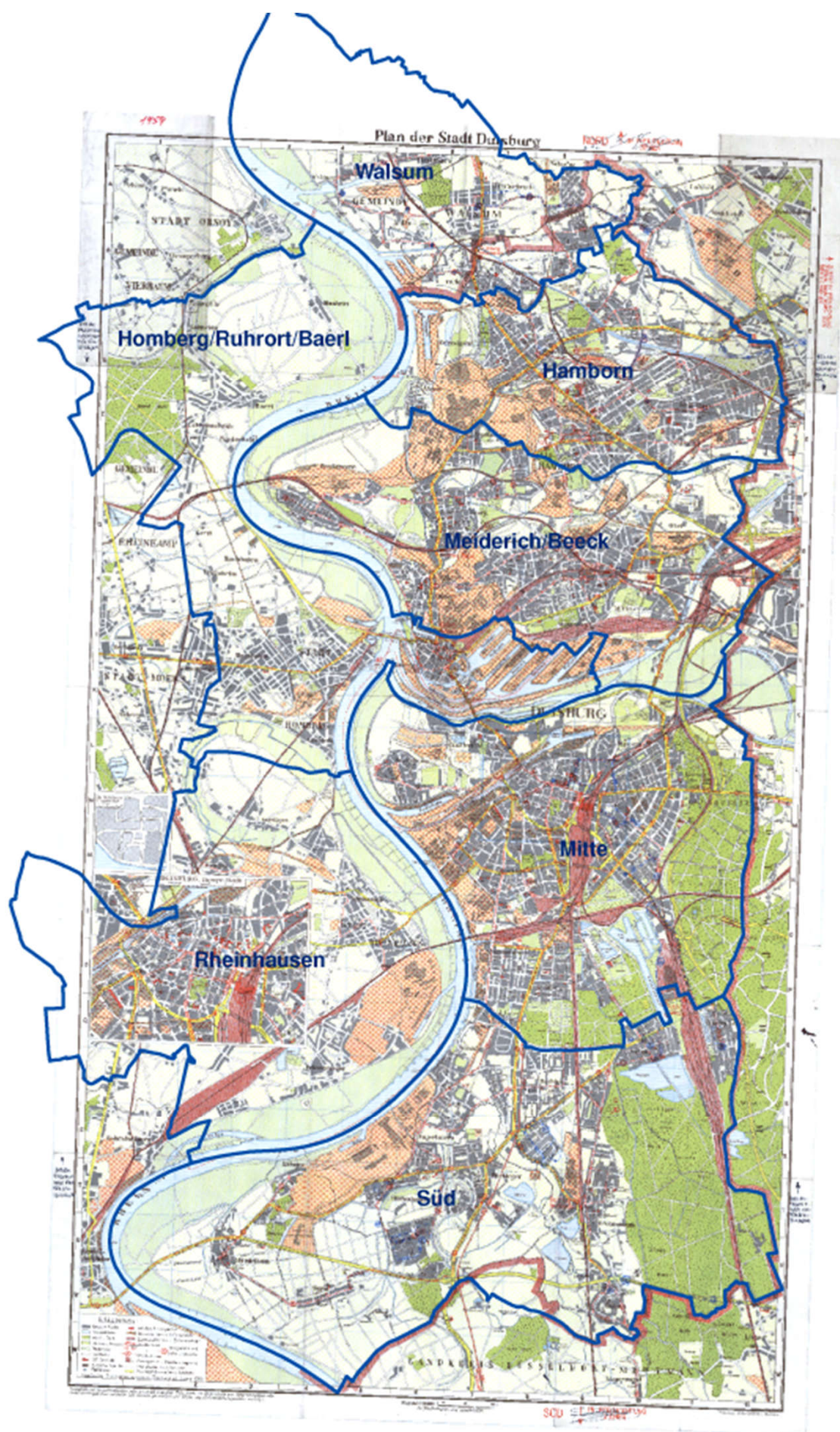
**1962-1960**

Duisburg 1962  
Rheinhausen 1961  
Walsum 1960





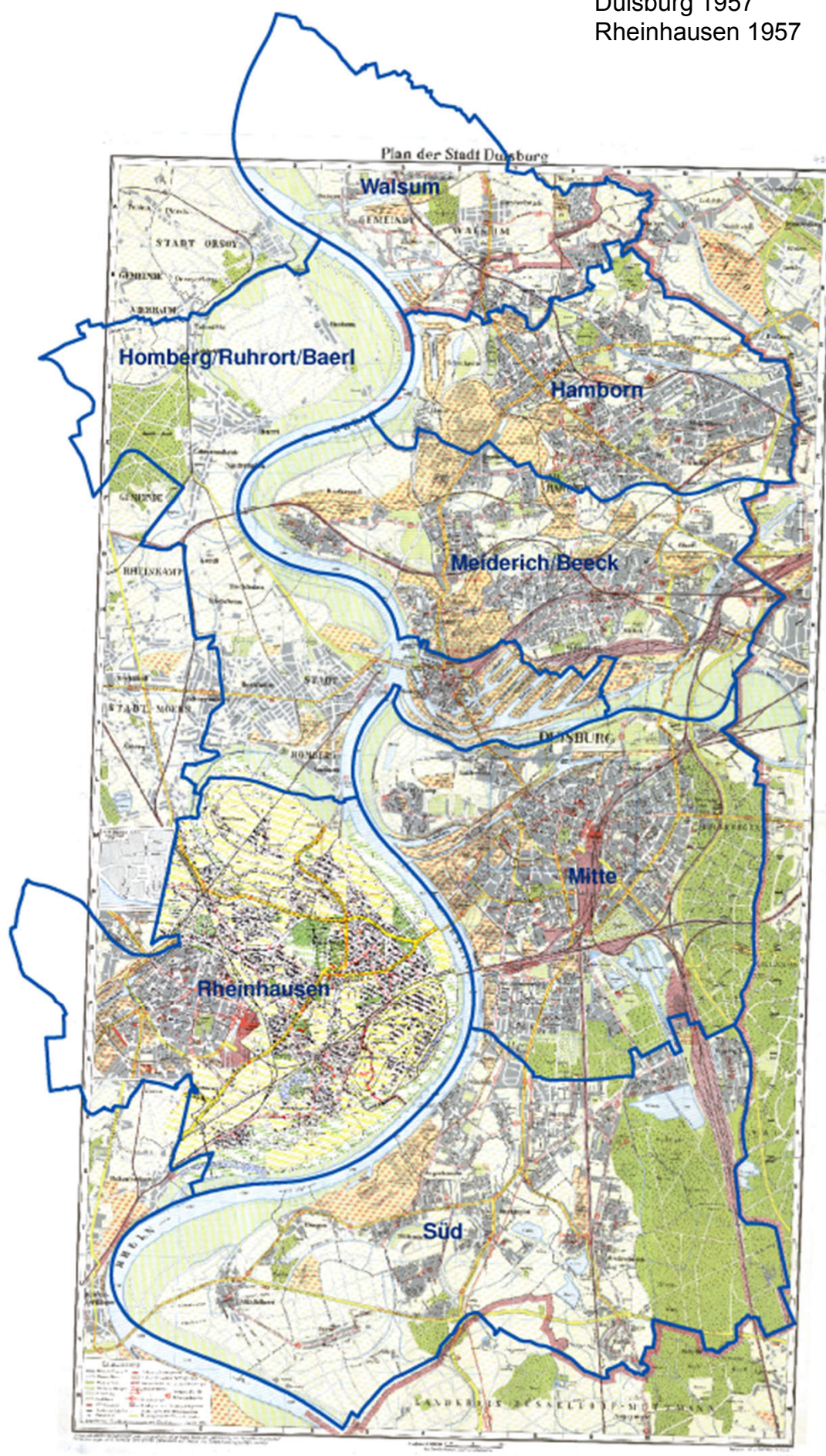
1959





1957

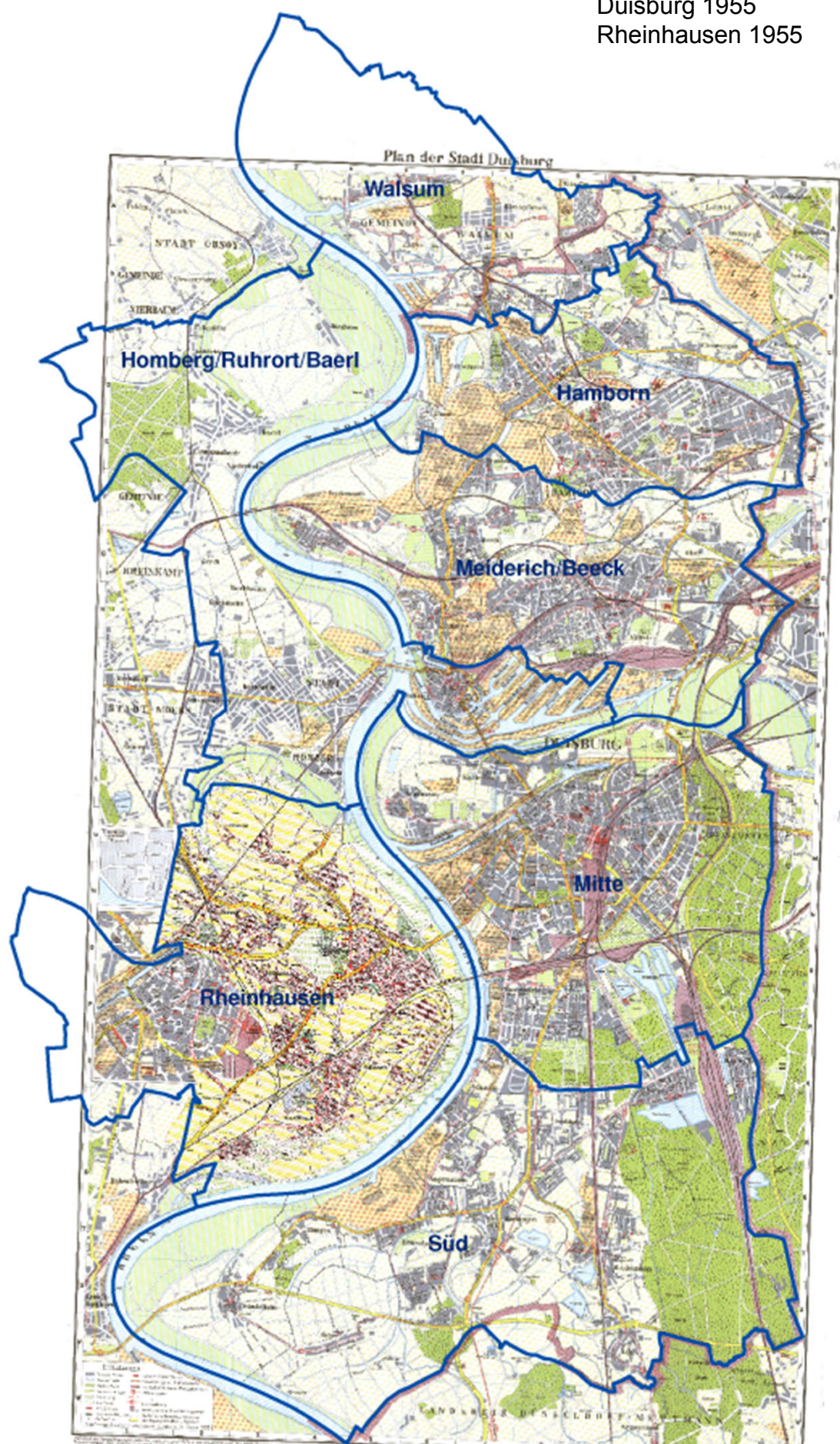
Duisburg 1957  
Rheinhausen 1957





1955

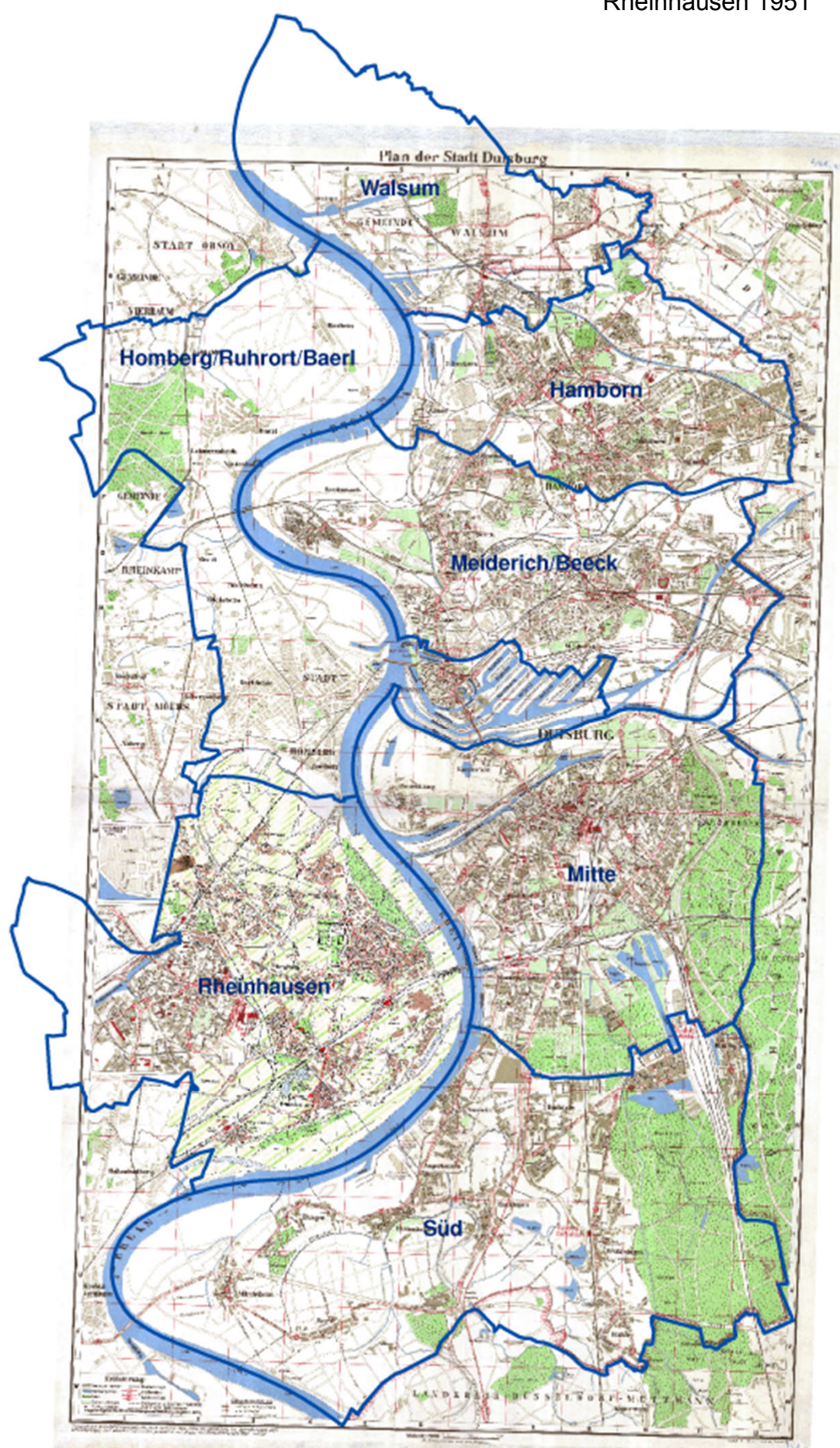
Duisburg 1955  
Rheinhausen 1955





1951

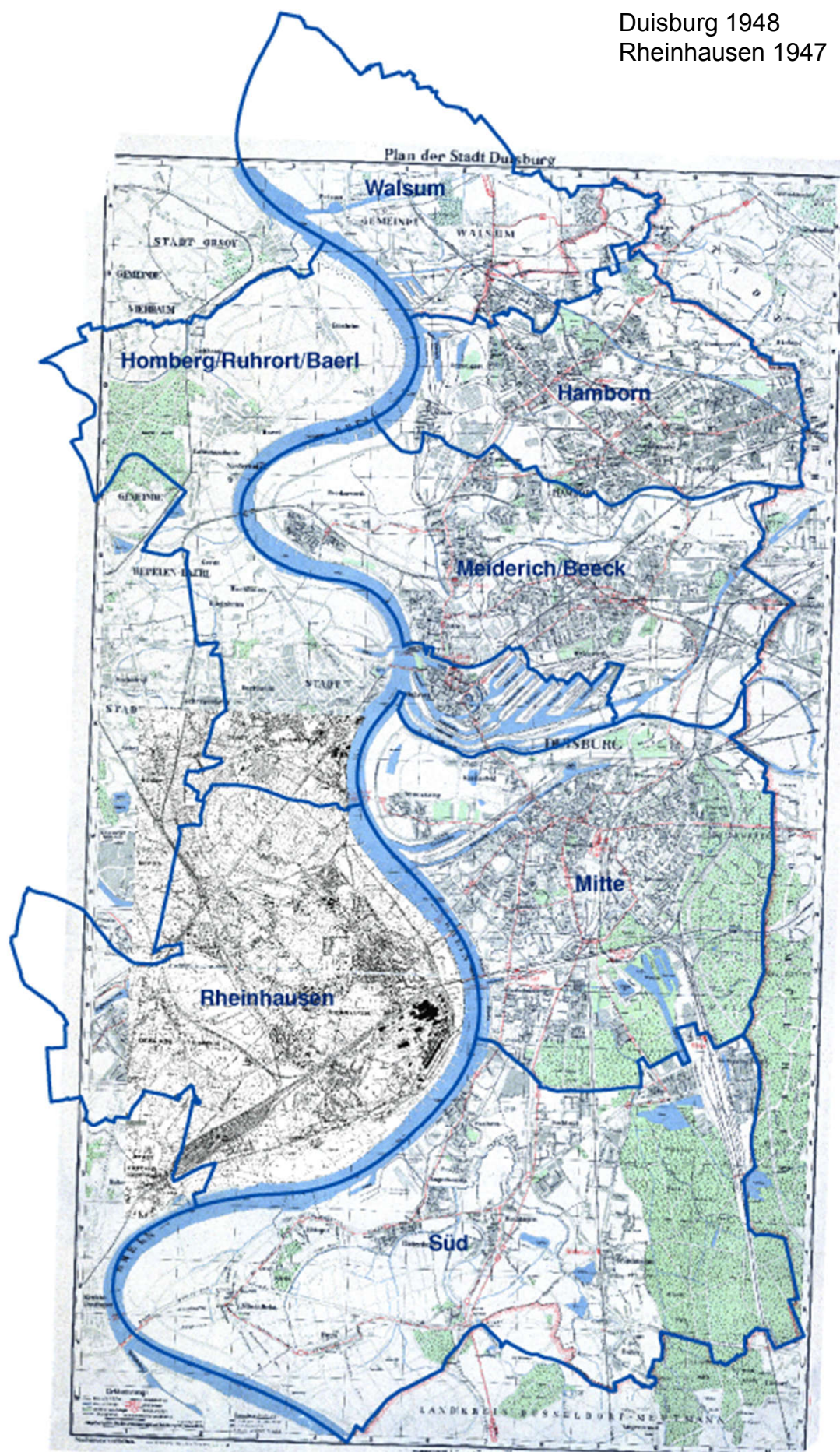
Duisburg 1951  
Rheinhausen 1951





1948-1947

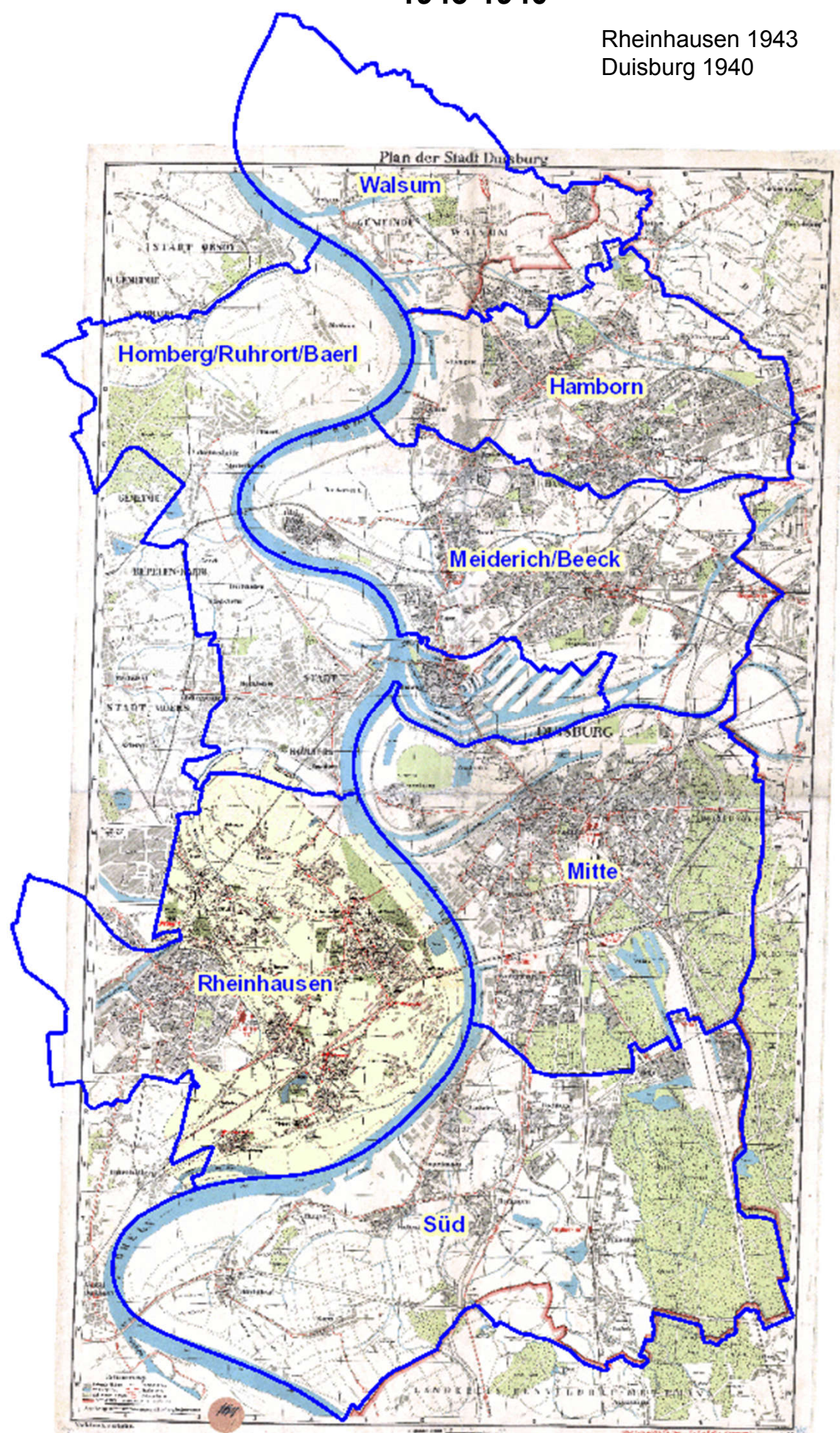
Duisburg 1948  
Rheinhausen 1947





1943-1940

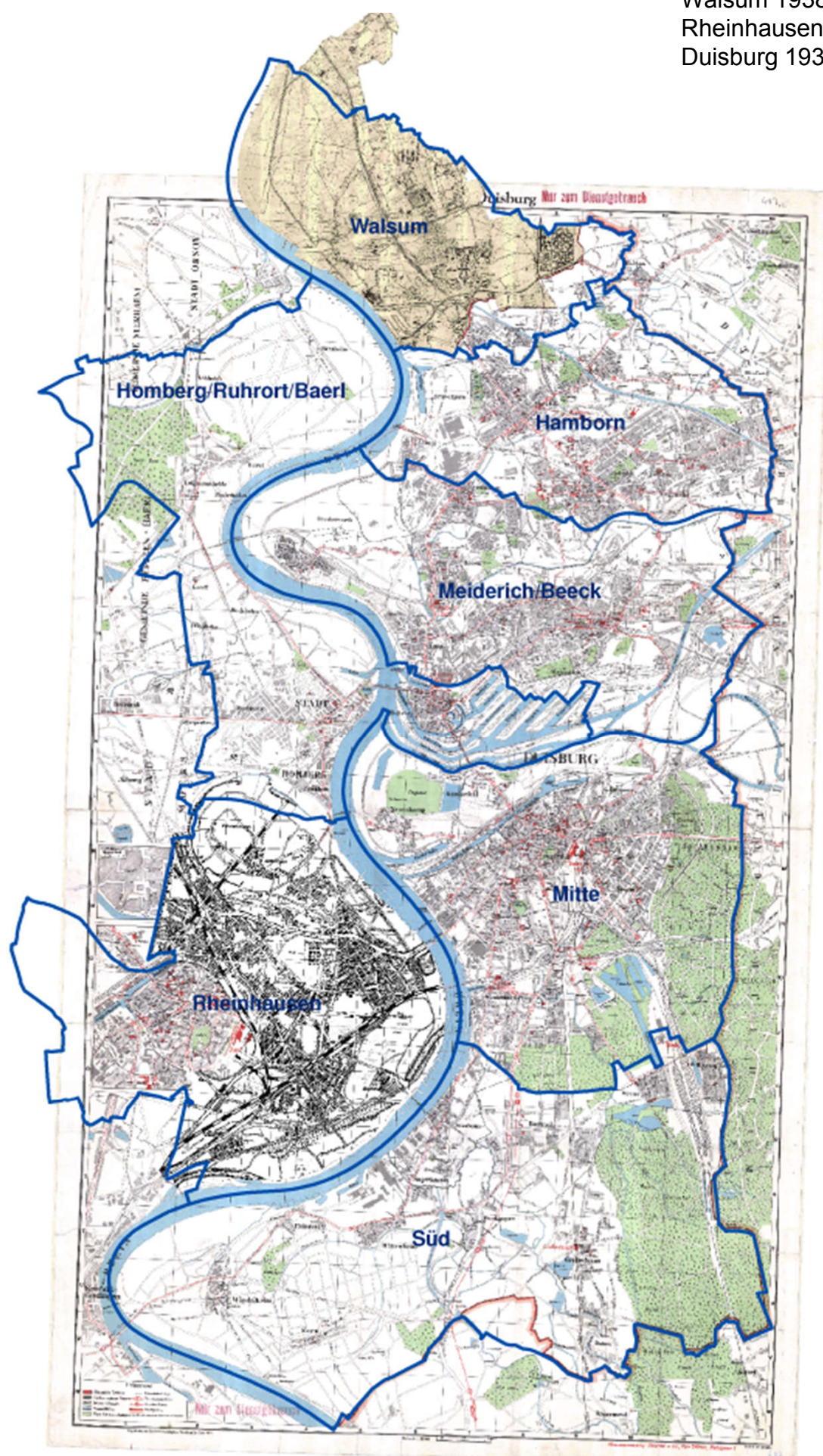
Rheinhausen 1943  
Duisburg 1940





1938-1936

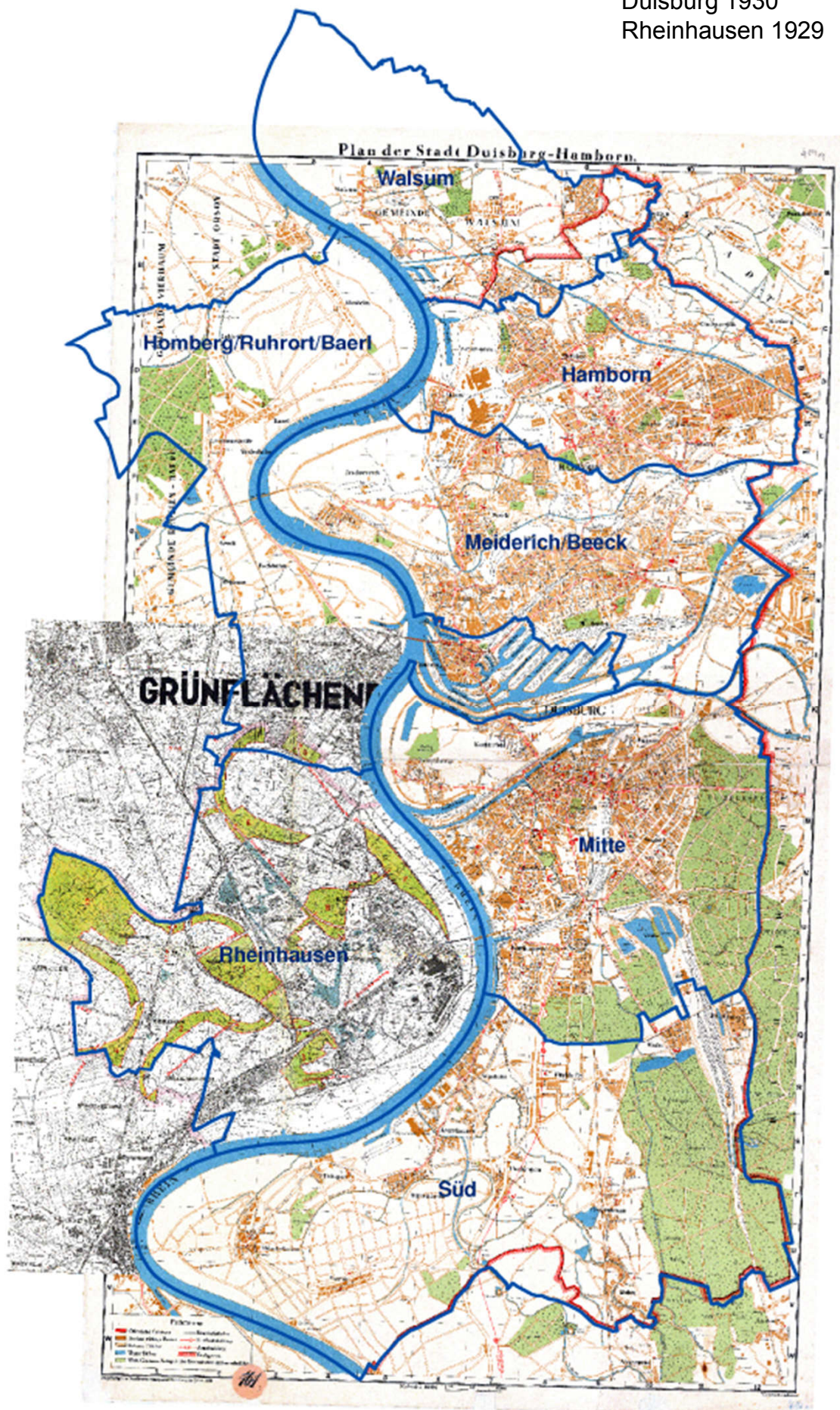
Walsum 1938  
Rheinhausen 1938  
Duisburg 1936





## 1930-1929

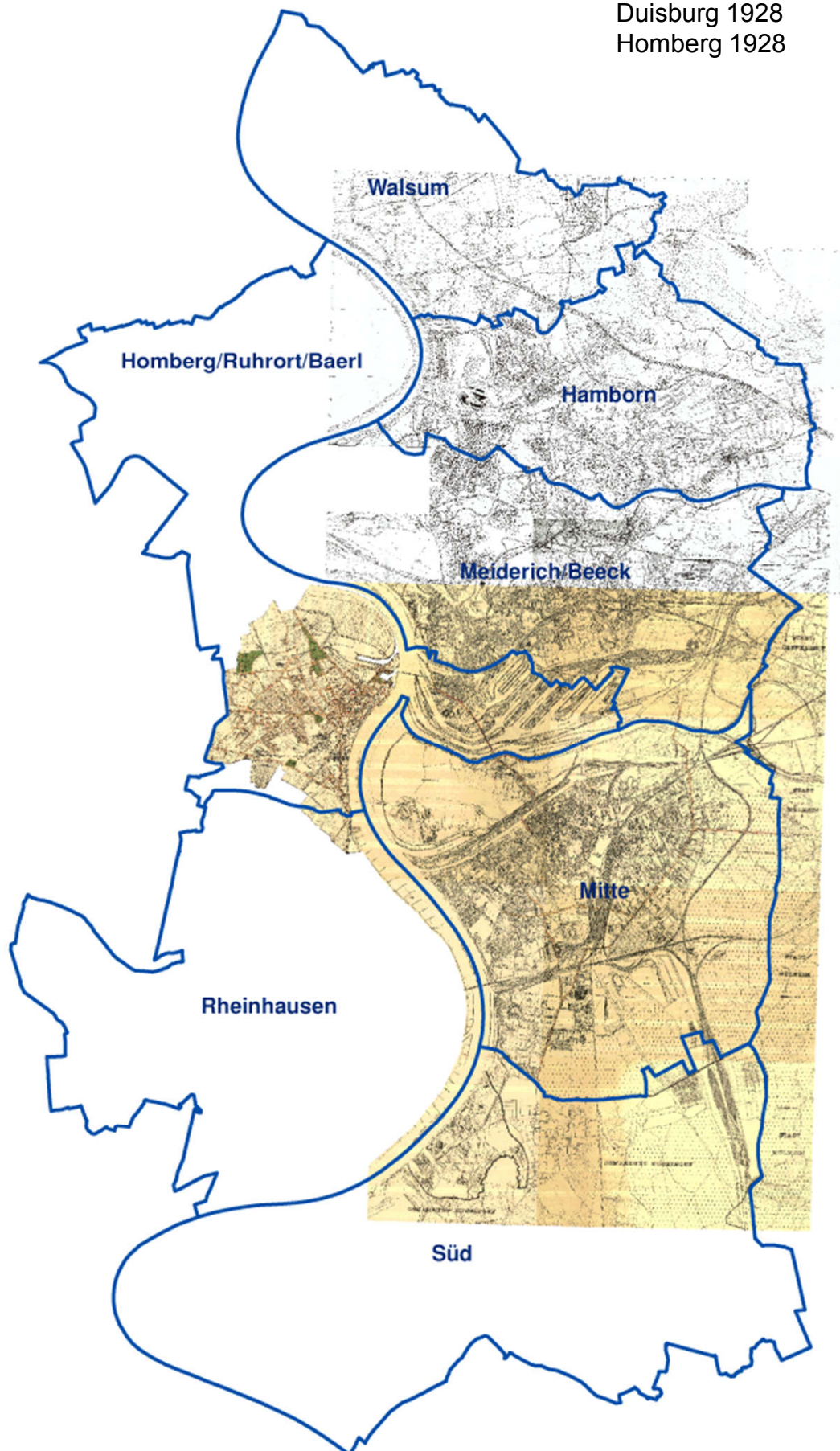
Duisburg 1930  
Rheinhausen 1929





**1929-1928**

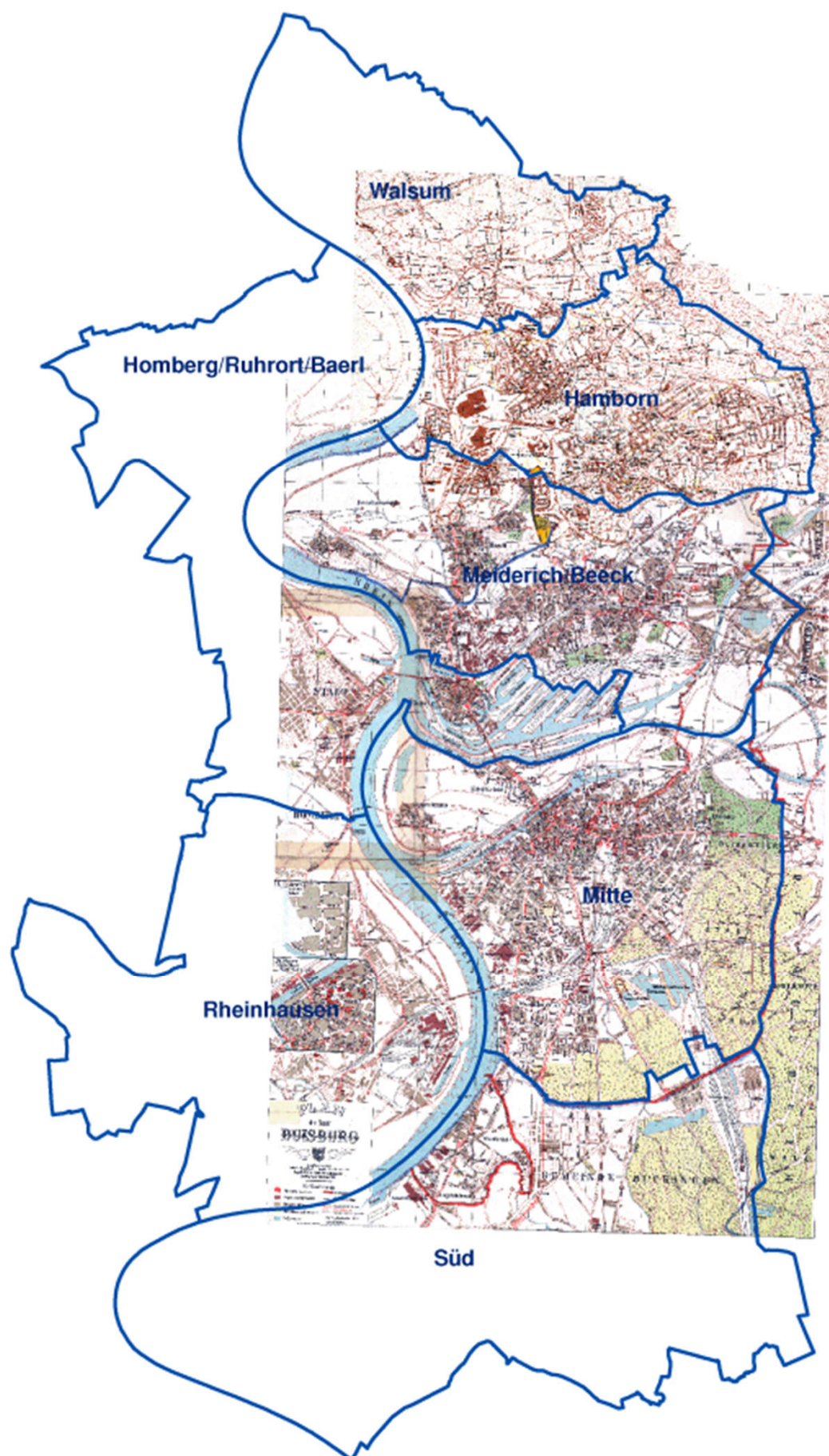
Hamborn/Walsum 1929  
Duisburg 1928  
Homberg 1928





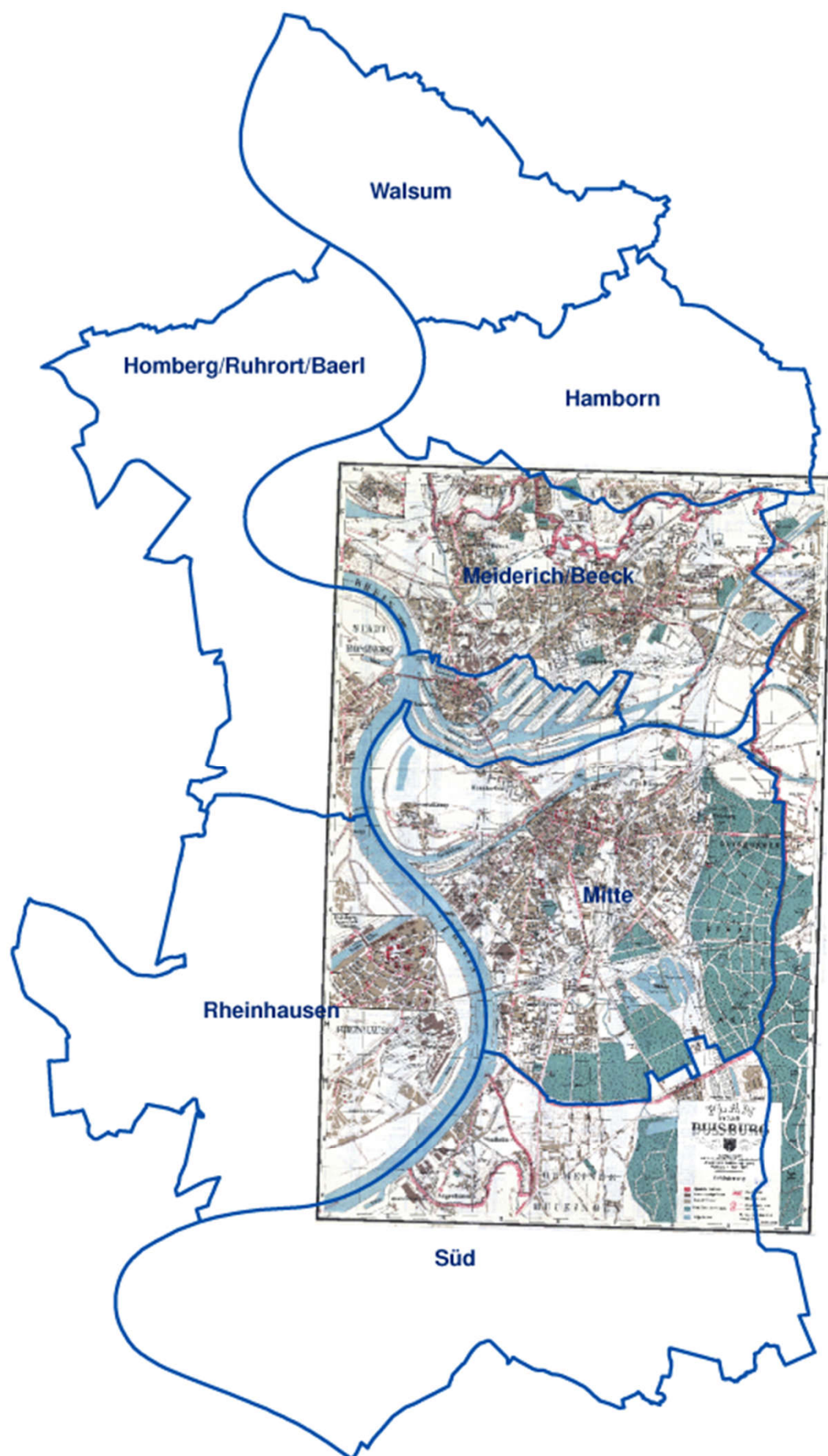
1927

Duisburg 1927  
Hamborn 1927





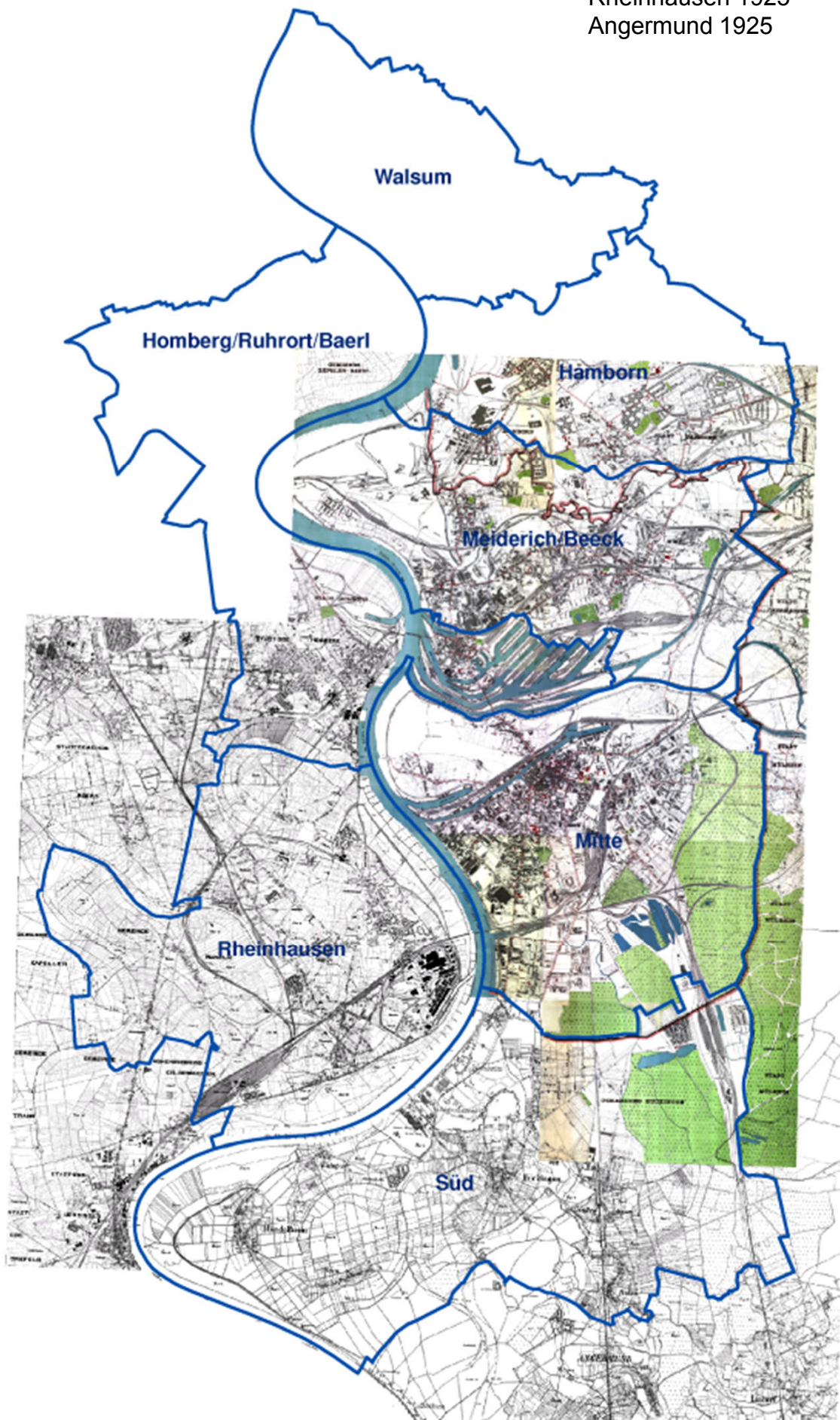
1926





1925

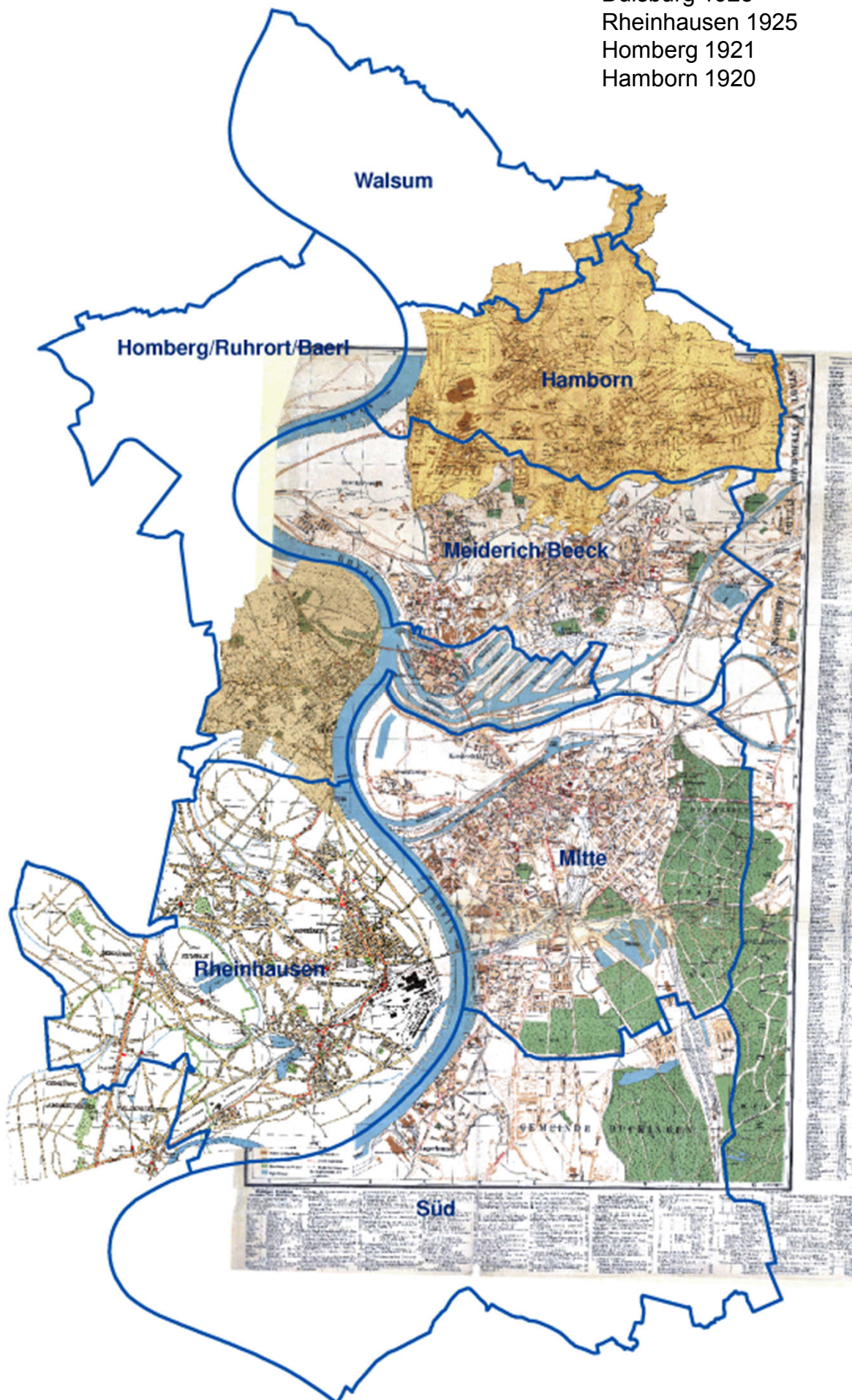
Duisburg 1925  
Rheinhausen 1925  
Angermund 1925





**1925-1920**

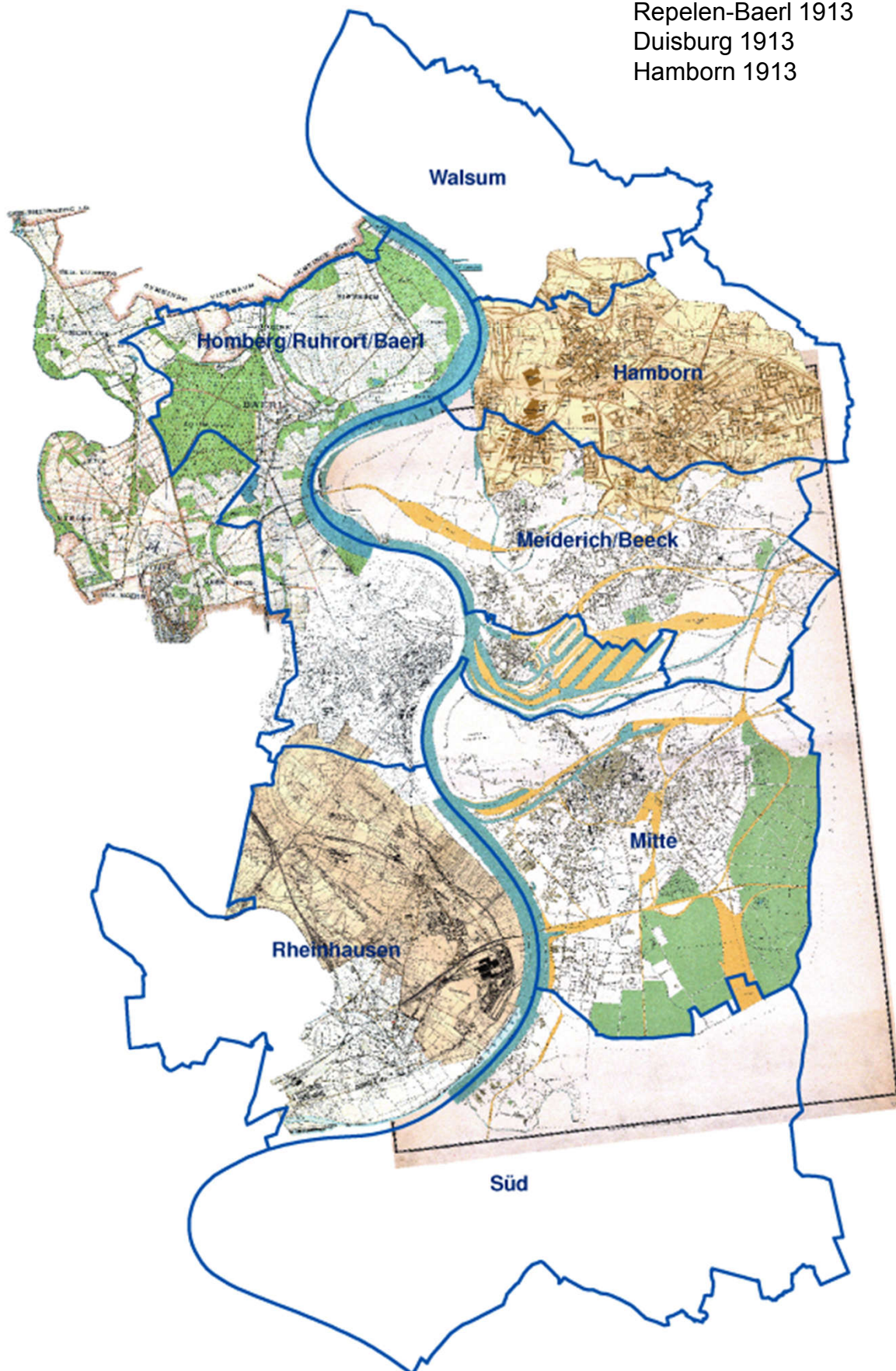
Duisburg 1925  
Rheinhausen 1925  
Homberg 1921  
Hamborn 1920





## 1914-1913

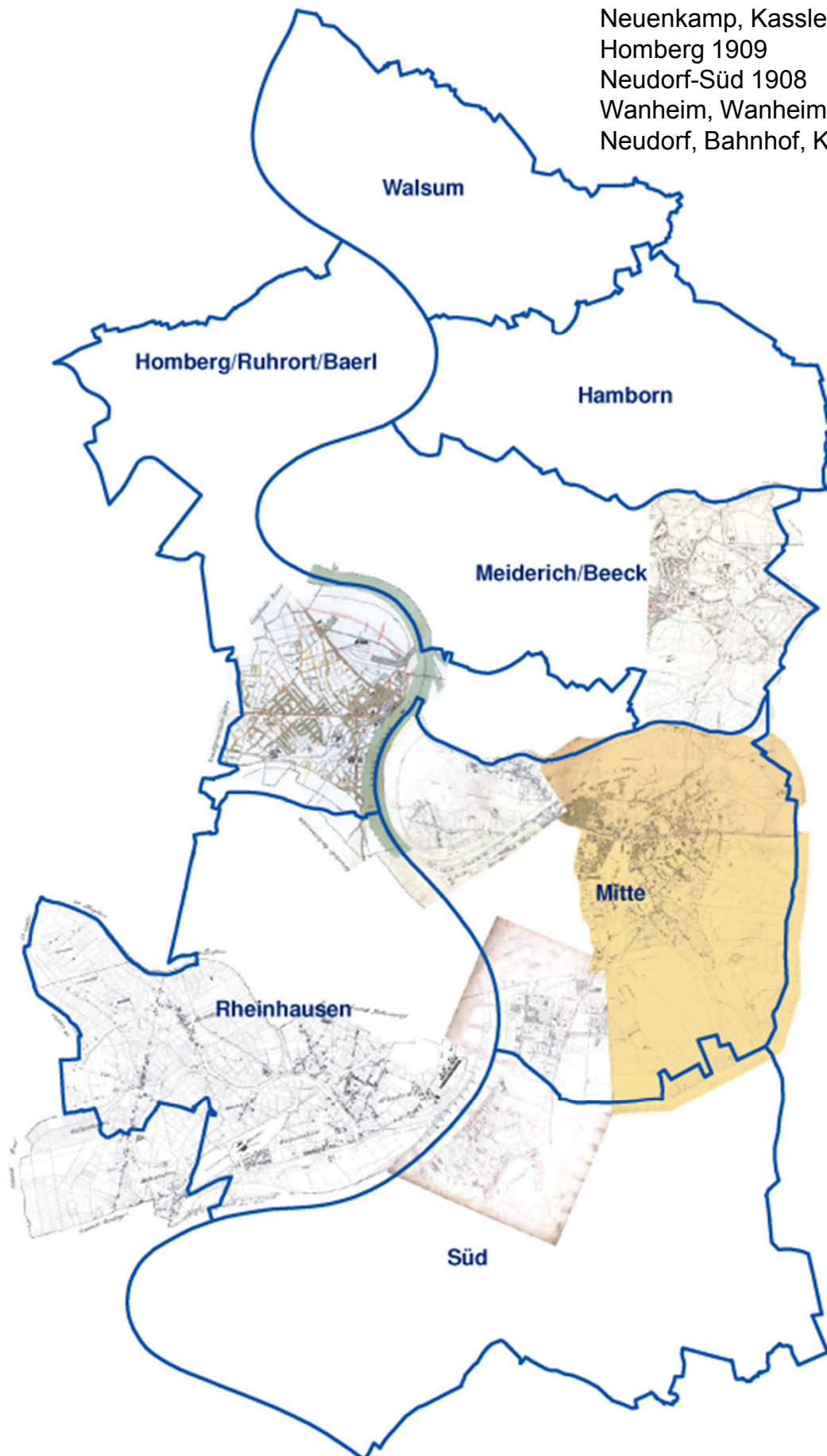
Hochemmerich 1914  
Friemersheim-Bliersheim 1914  
Homberg 1914  
Repelen-Baerl 1913  
Duisburg 1913  
Hamborn 1913





## 1912-1908

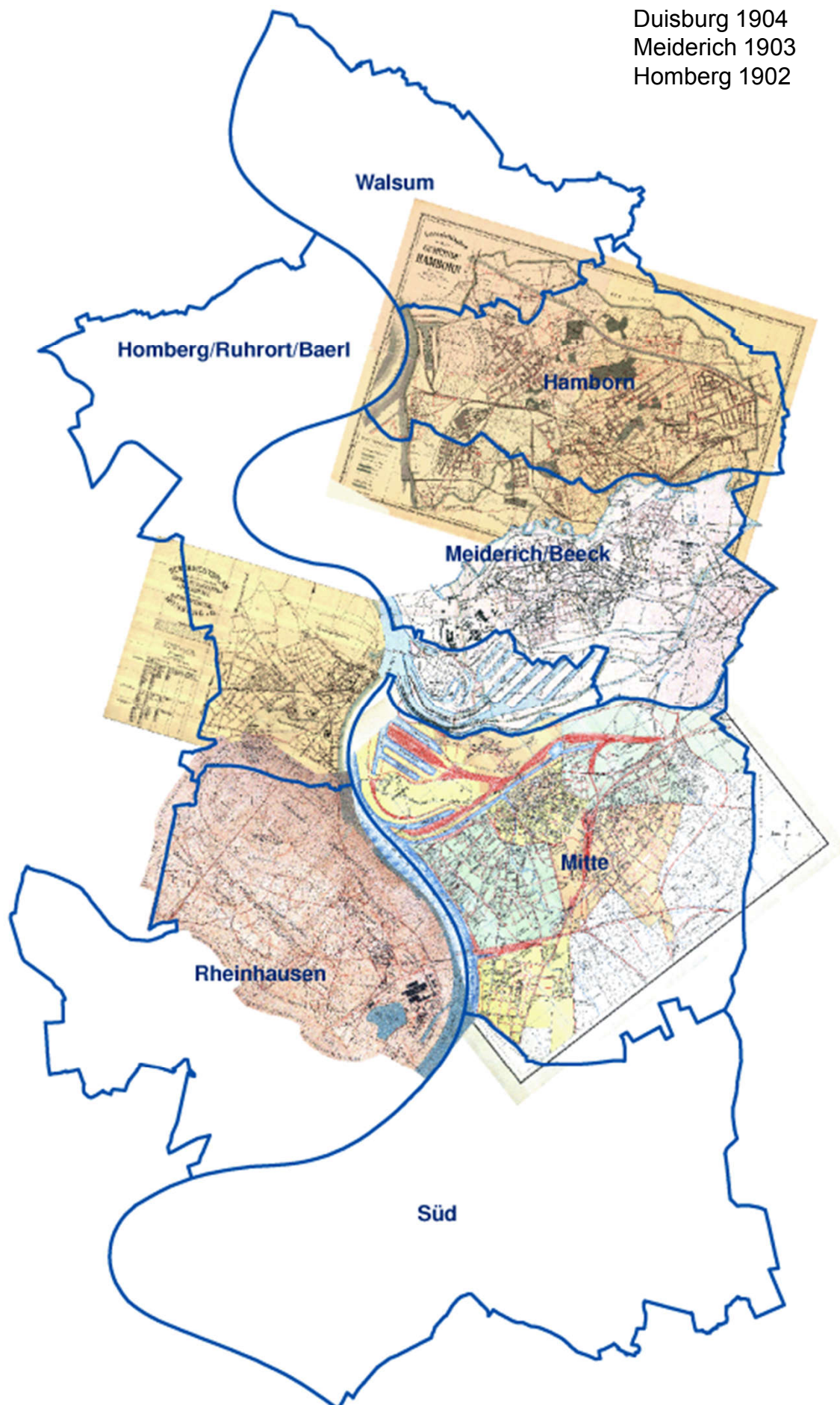
Friemersheim 1912  
Innenstadt, Duissern 1910  
Meiderich 1910  
Neuenkamp, Kasslerfeld 1910  
Homberg 1909  
Neudorf-Süd 1908  
Wanheim, Wanheim-Angerhausen 1908  
Neudorf, Bahnhof, Kaiserviertel 1908





## 1908-1902

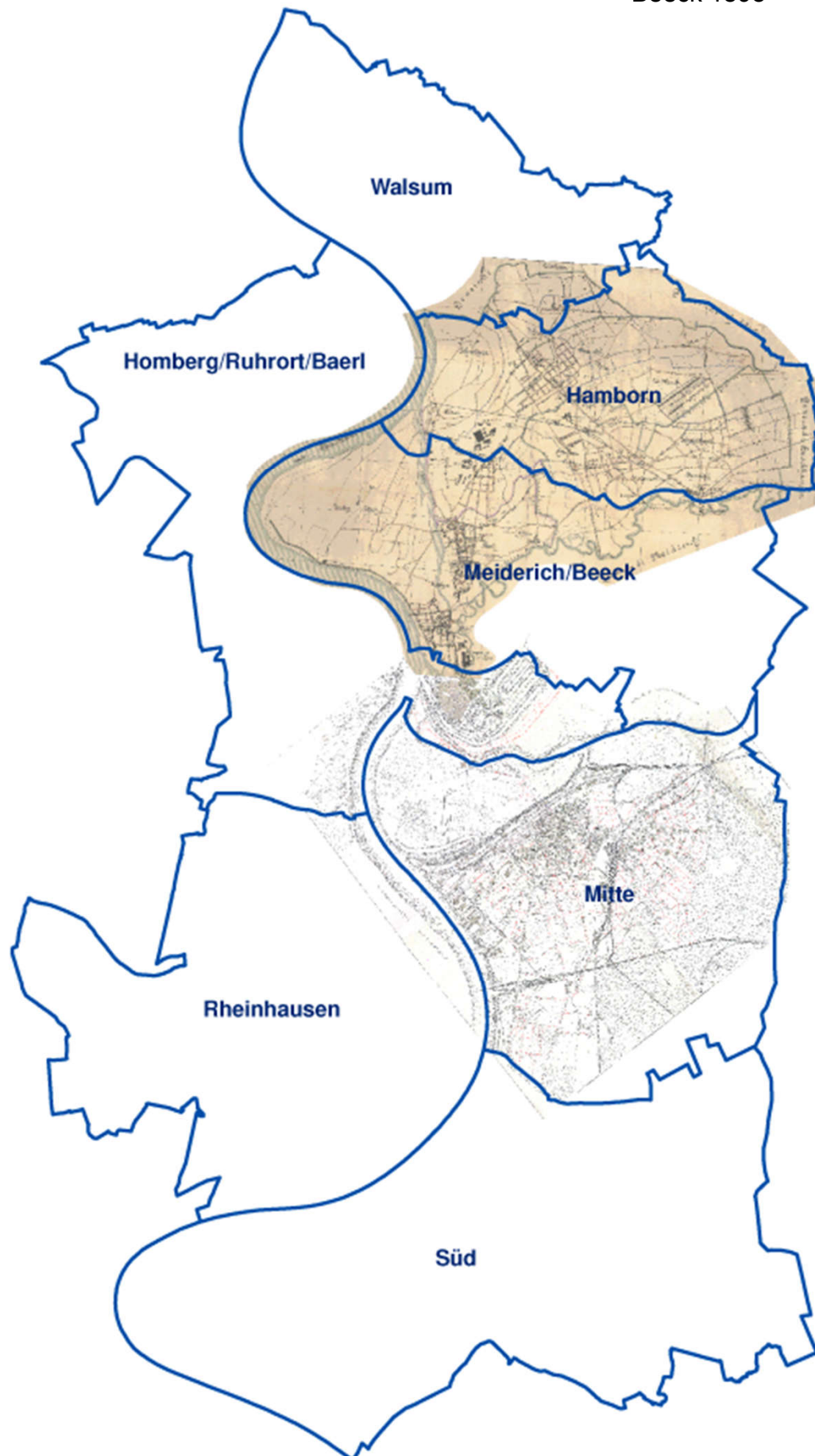
Hamborn 1908  
Hochemmerich 1906  
Duisburg 1904  
Meiderich 1903  
Homberg 1902





1898

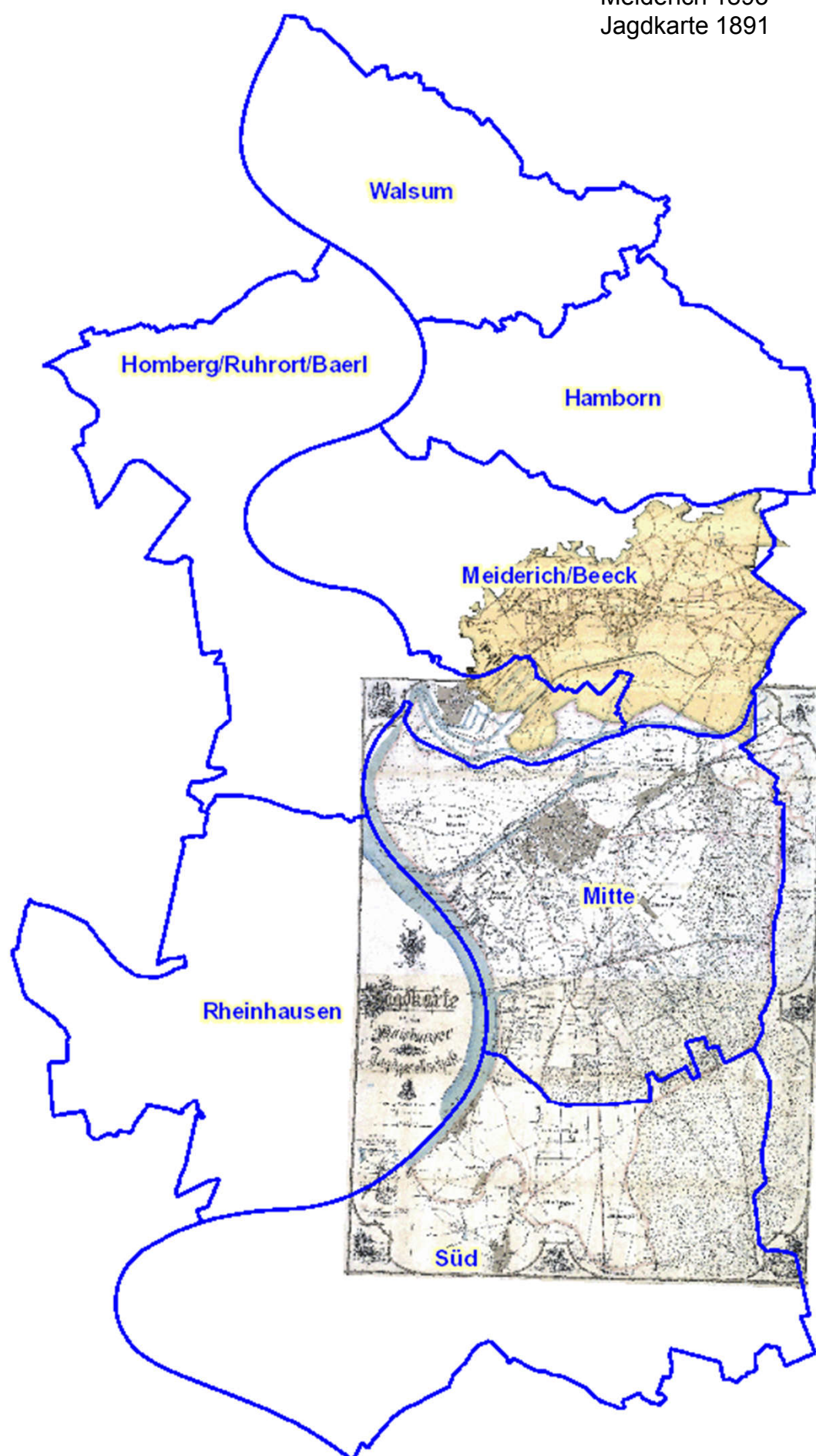
Duisburg 1898  
Beeck 1898





1893-1991

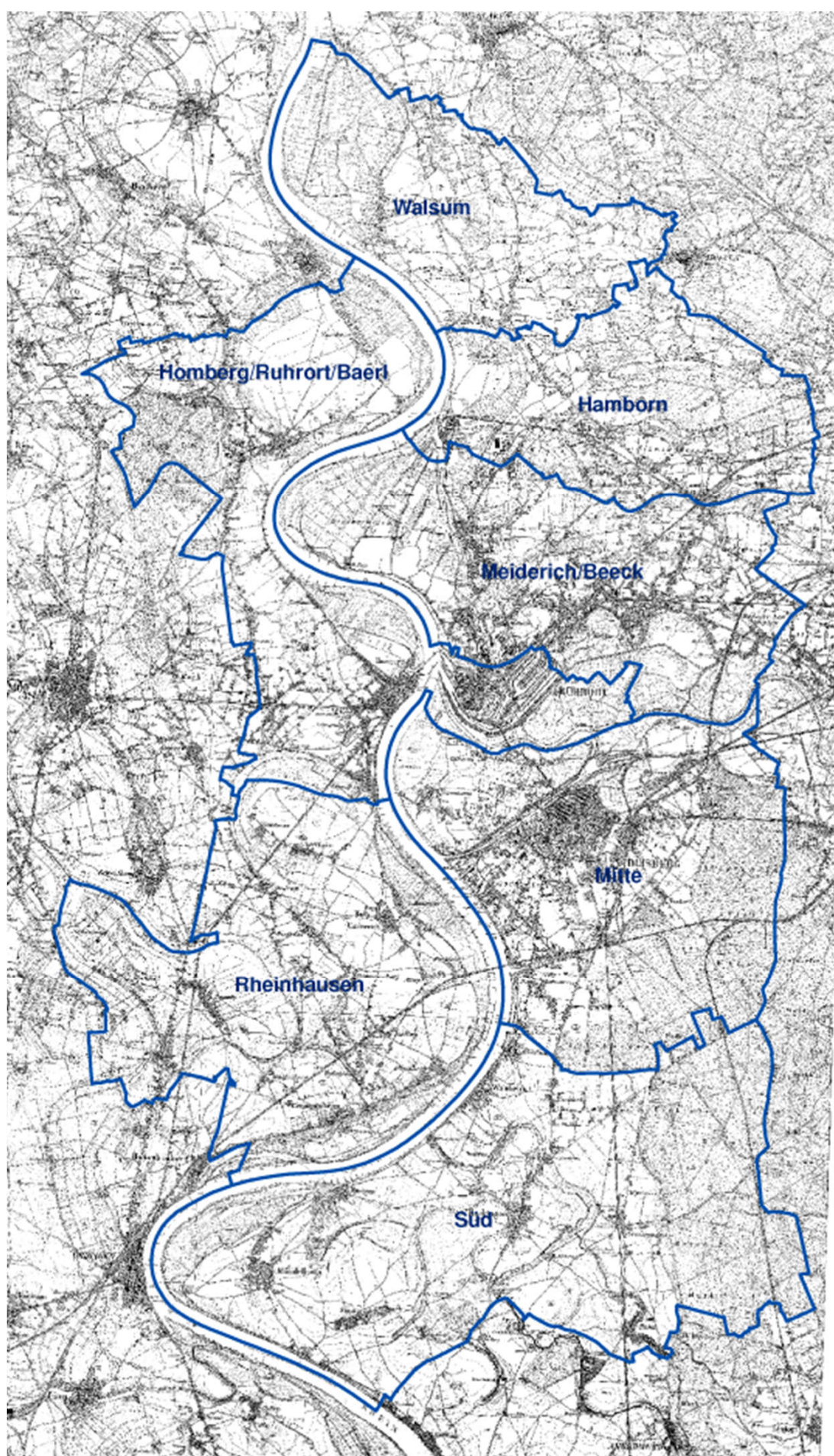
Meiderich 1893  
Jagdkarte 1891





**1893-1892**

Preuß. Neuaufnahme 1893-92





**1885-1876**

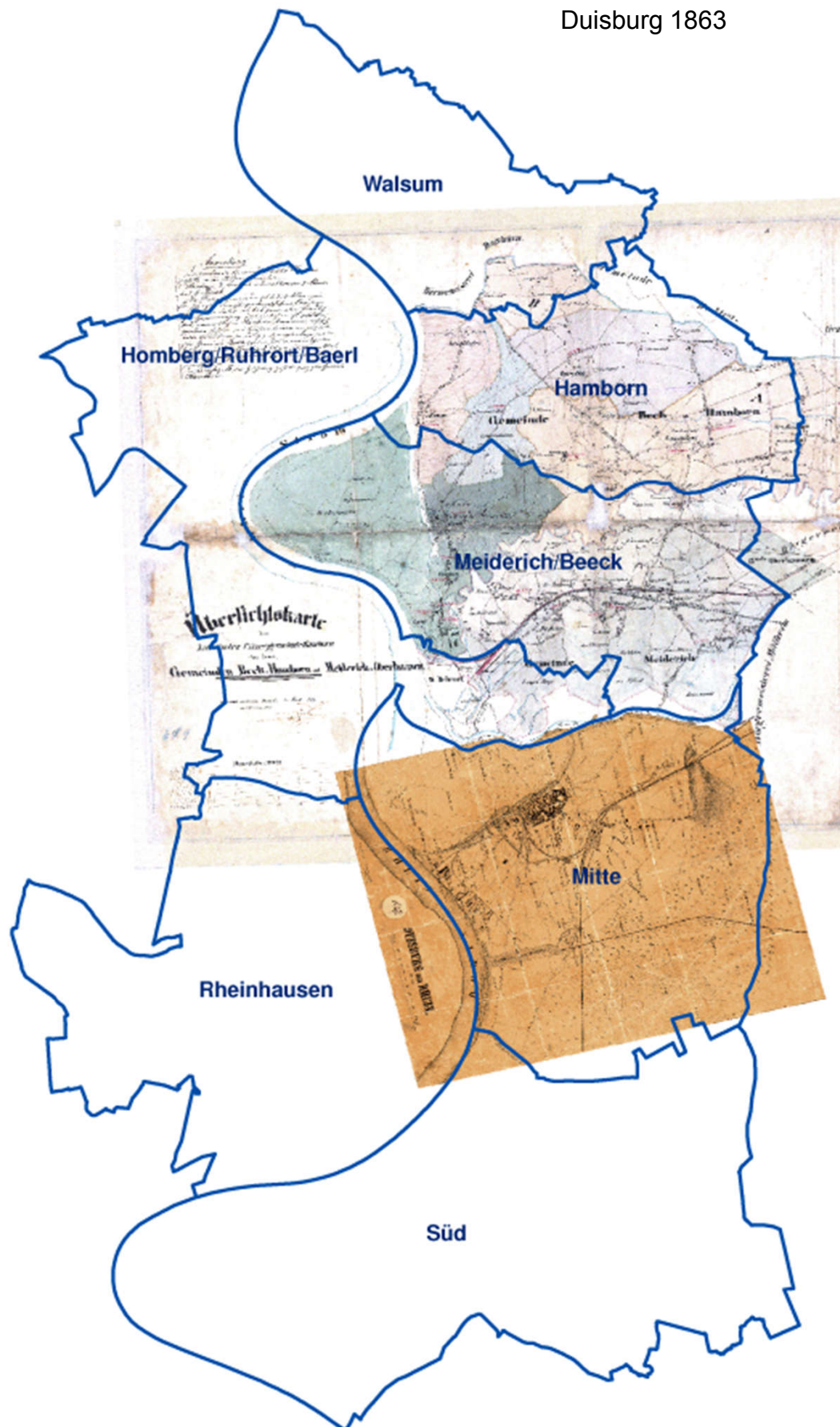
Meiderich 1885  
Duisburg 1876





1869-1863

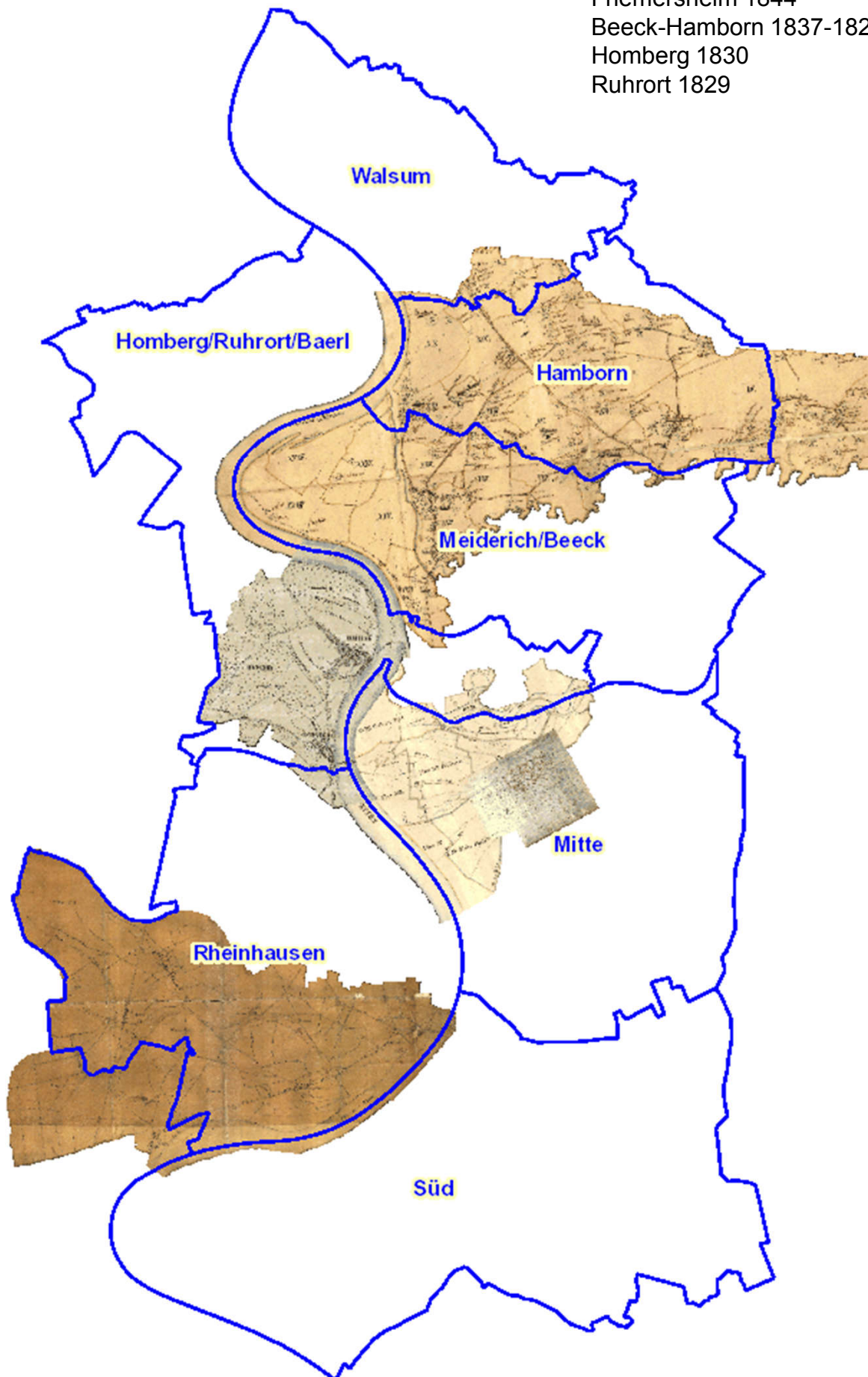
Hamborn-Beeck-Meiderich 1869  
Duisburg 1863





## 1850-1827

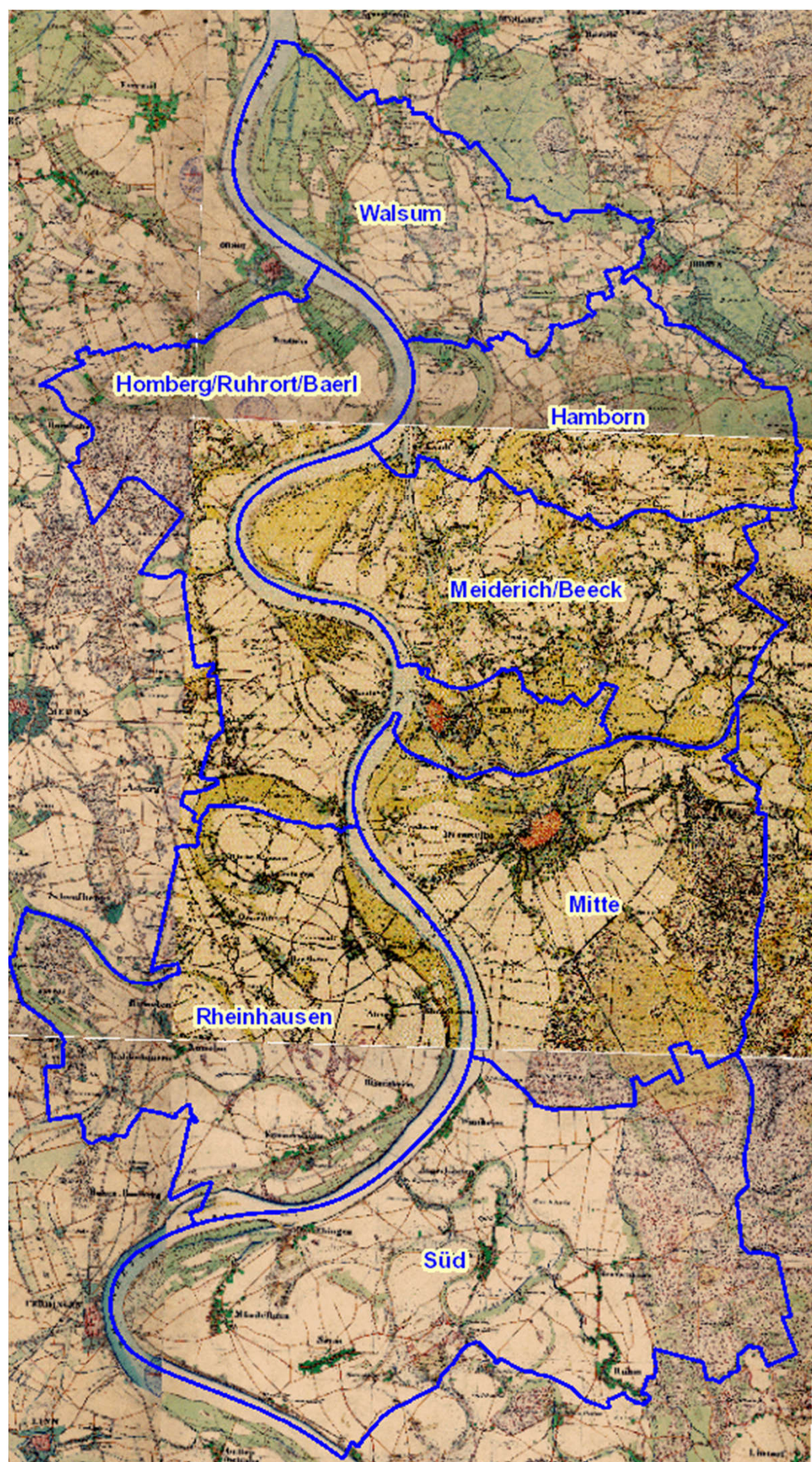
Duisburg 1850  
Friedersheim 1844  
Beeck-Hamborn 1837-1827  
Homberg 1830  
Ruhrort 1829





1844-1843

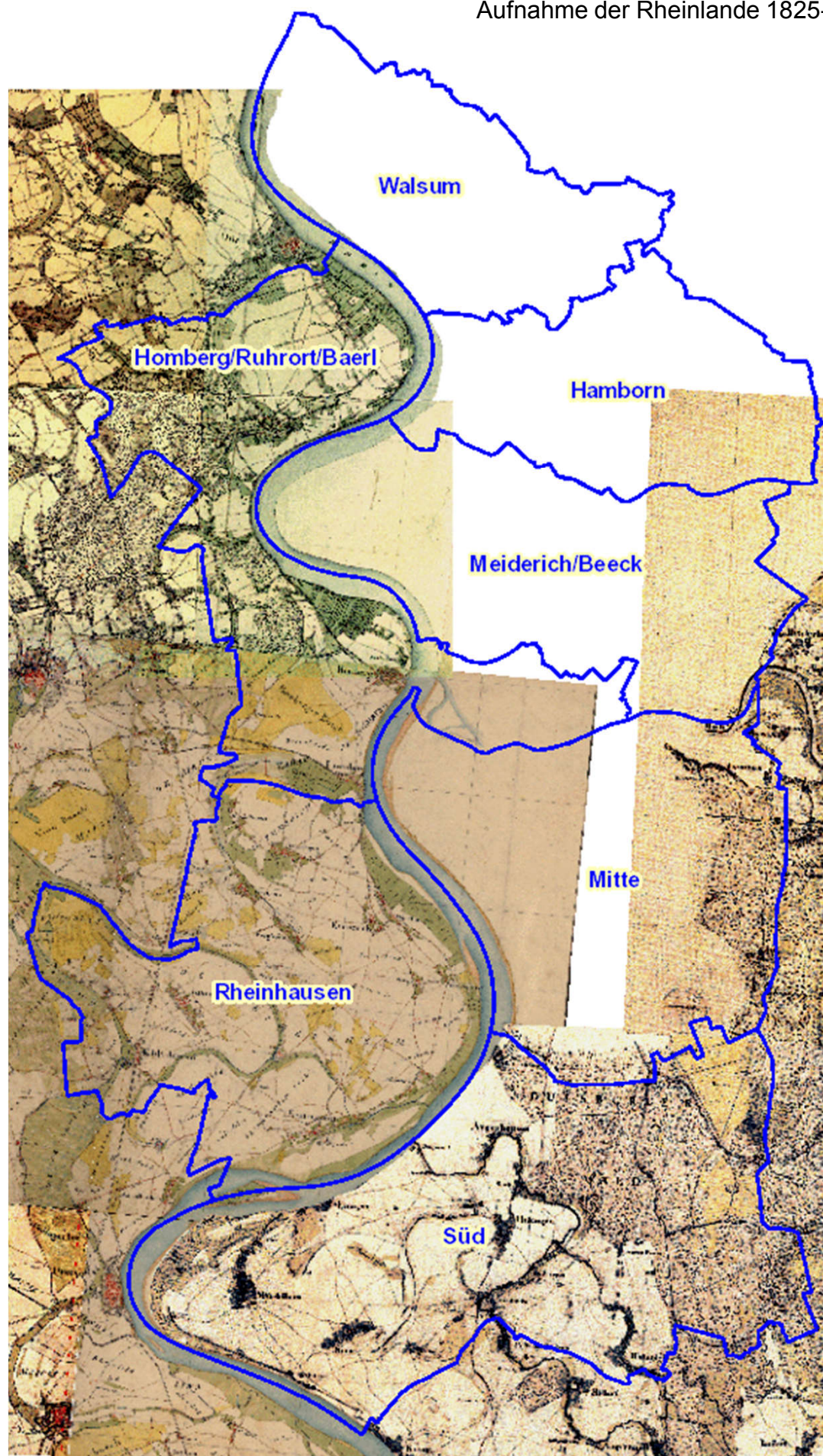
Preuß. Uraufnahme 1844-1843





1825-1803

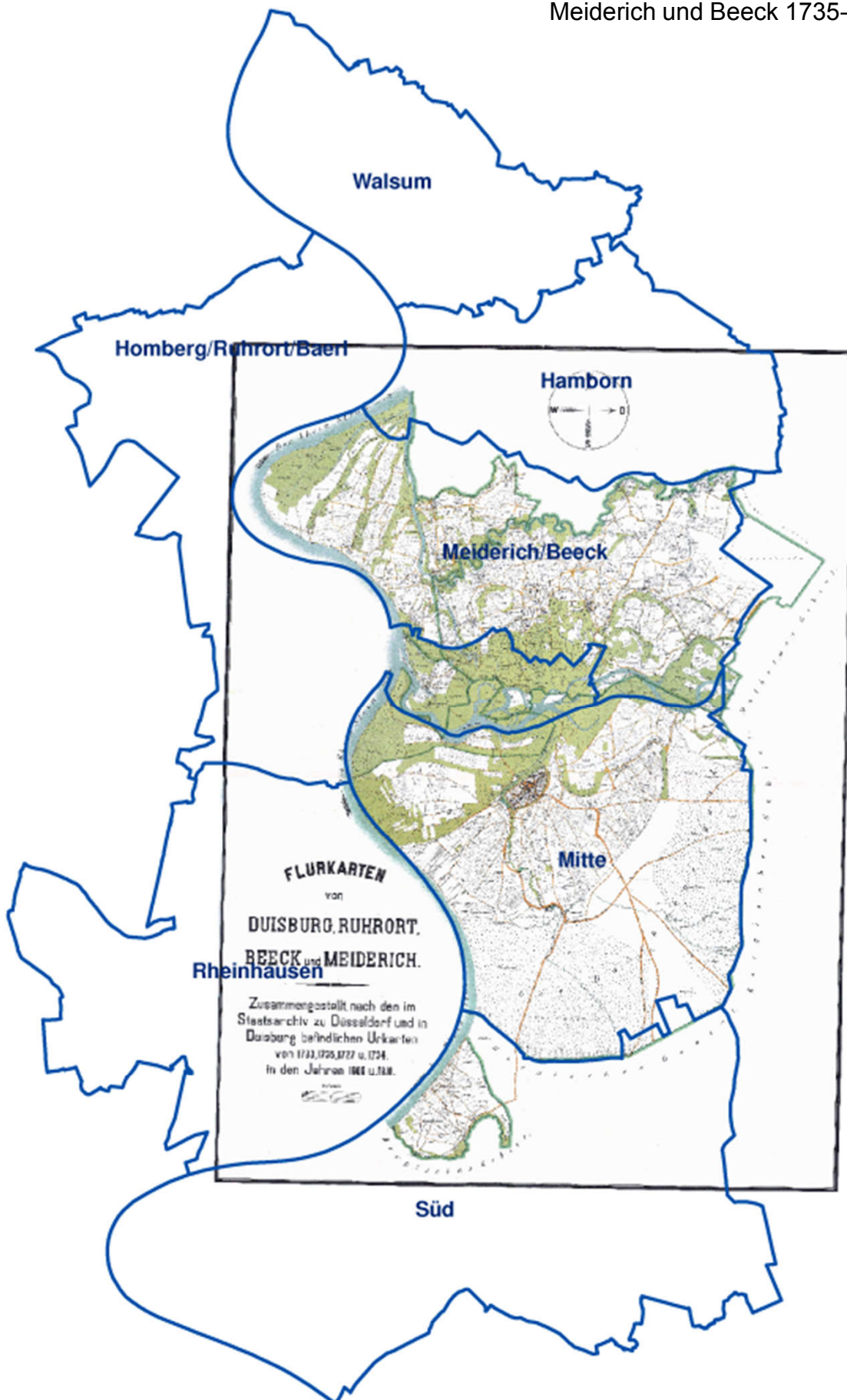
Aufnahme der Rheinlande 1825-1803





1735-1727

Übersichtskarte Duisburg, Ruhrort,  
Meiderich und Beeck 1735-1727





## 18. Jahrhundert

Duisburg im 18. Jahrhundert

